

Hinges & Brackets

The choice of hinges, brackets and associated parts depends on end frame and door design and the test requirements for end wall and racking loads.

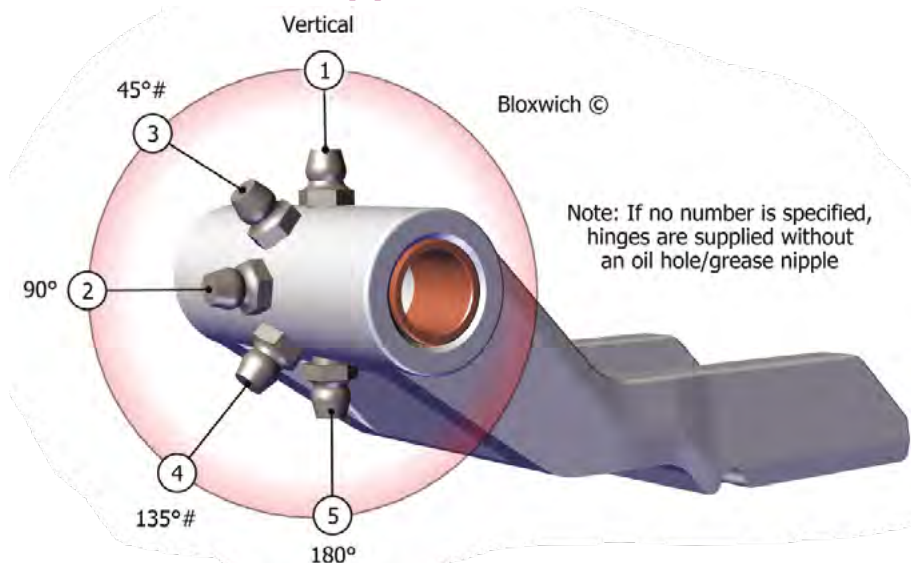
We will be pleased to give detailed advice, but the following points should be considered:

- Forged steel door hinges can usually only be welded to the doors
- Finish, self colour, zinc plated or galvanised are available*
- Nylon (A), (B) & (D) or phosphor bronze (C) bushes are available*
- Bolt-on brackets and hinges can be fitted after final painting
- If repairs are necessary, removal or replacement of bolt-on brackets and hinges is simple
- Flat back design forged steel door hinges are not recommended for use on offshore container main doors
- Customer logos are available subject to minimum order quantities*. No logo (O) is standard
- Grease nipples (N or NSS) can only be fitted to our range of forged hinges (see illustration for fitting positions). Other positions available on request
- Bloxwich recommend $\varnothing 12.7$ pins or 1/2" bolts are used for $\varnothing 12.7$ bushes, however if increased clearance is required $\varnothing 12$ pins or M12 bolts can be fitted*
- For more information and dimensions please visit <https://www.bloxwichdoorgear.com>

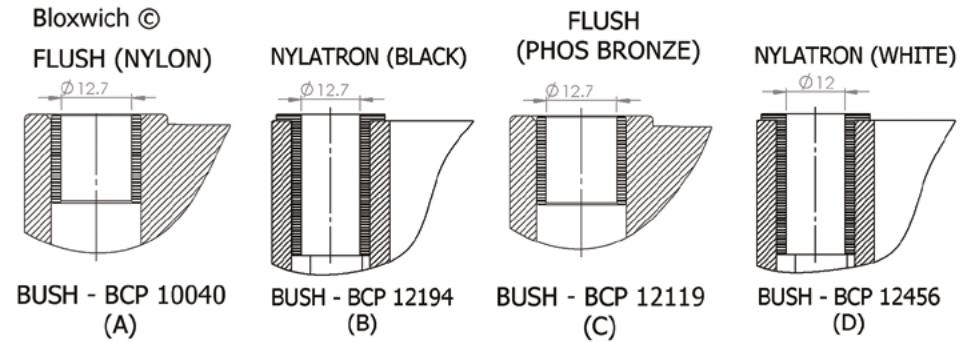
*Selected hinges only

#Subject to quantity and lead time

Oil Hole/Grease Nipple Positions

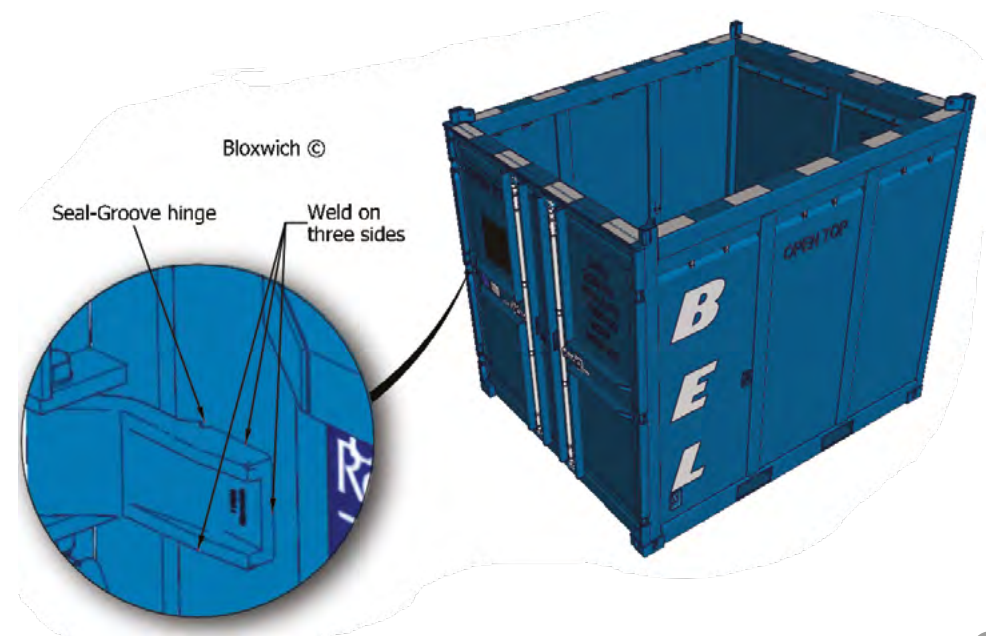


Bush Options



Seal-Groove Hinges

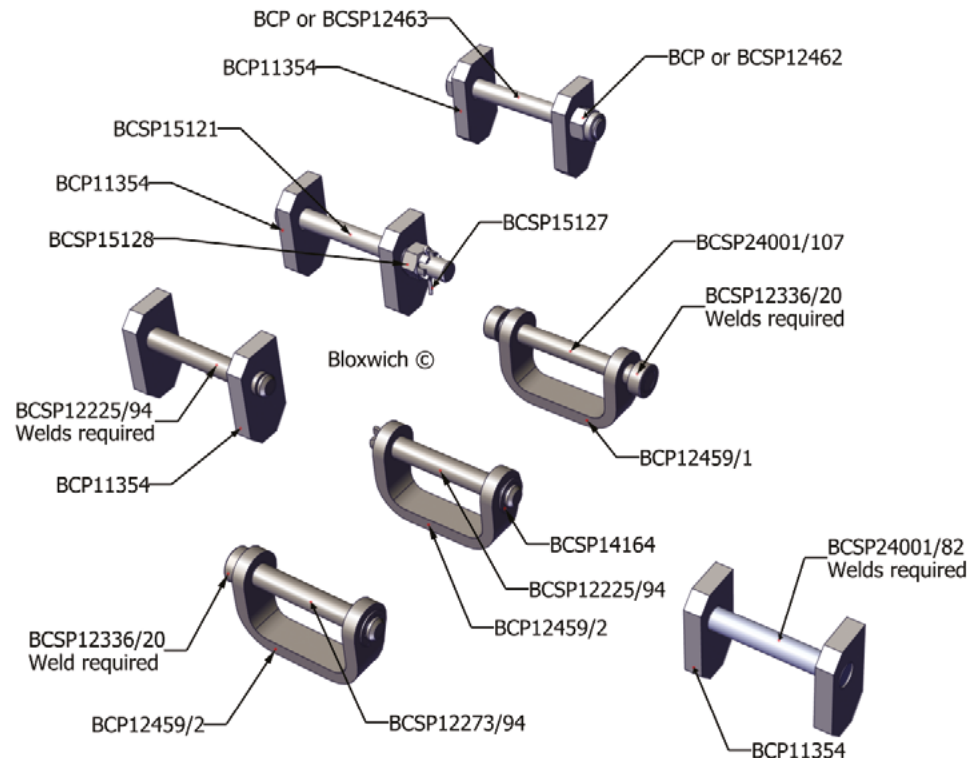
- Gives greater hinge life
- Sealant forms barrier across unwelded part of hinge (dependent upon the design)
- Prevents corrosion by stopping ingress of water behind hinge
- Sealant easily applied by conventional sealant gun
- Prevents rust streaks (as found with conventional hinges) from forming on doors
- Seal-groove provides visual proof that the hinge has been sealed over total width



Bloxwich Hinge Pin Arrangements

Below are various hinge pin arrangements showing common configurations. Other configurations are available, we will be pleased to give detailed advice, but the following points should be considered:

- The below are only recommendations and the racking and door burst capabilities of the vehicle or unit must be established by the designer. Hinge brackets or butts shown are for illustration purposes only.
- Bloxwich recommend the fitment of grease nipples and regular inspection and maintenance of hinge components in service.
- Made by Bloxwich in accordance with our design standards, copyrights, trademarks and patents.
- When required Bloxwich provide certificates to 2.2 according to EN10204. When required Bloxwich will provide test results by an independent UK test house as per table of requirements 3-6 of DNV 2.7-1 (2013).



Model No. BCP1032-001 (Mild Steel) Model No. BCP1032-002 (Mild Steel) Model No. BCP1054-001 (Aluminium) Forged Door Hinge 83/91mm

Supplied in: Self colour

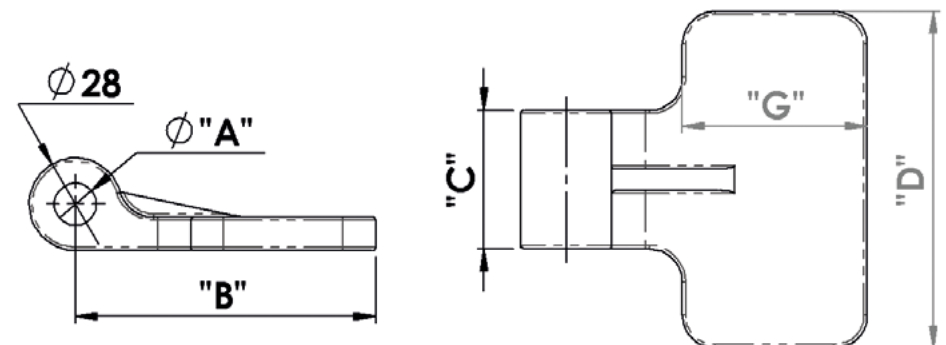
Use: Weld on hinge, to suit Ø12 hinge pin or M12 bolt or Ø12.7 hinge pin or 1/2" bolt or Ø15 hinge pin or 5/8" bolt. See table for details

Can be used with Bloxwich standard or special hinge butts or the BCP1037/010 or BCP1037/003 forged steel gudgeons

Weight: See table



Part No	A	B	C	D	E	Weight	Bush
BCP1032-001	12.7	83	40	76.2	44.5	520 g	N/A
BCP1032-002	16	83	38	76.2	44.5	500 g	N/A
BCP1054-001	12.7	91	42	102	57	270 g	Zinc plated steel bush



Model No. BCP11027 (Mild Steel) Forged Steel Door Hinge 111mm

Supplied in: Self colour or zinc plated

Use: Weld on hinge, bushed to suit Ø12.7 hinge pin or 1/2" bolt. See table for options

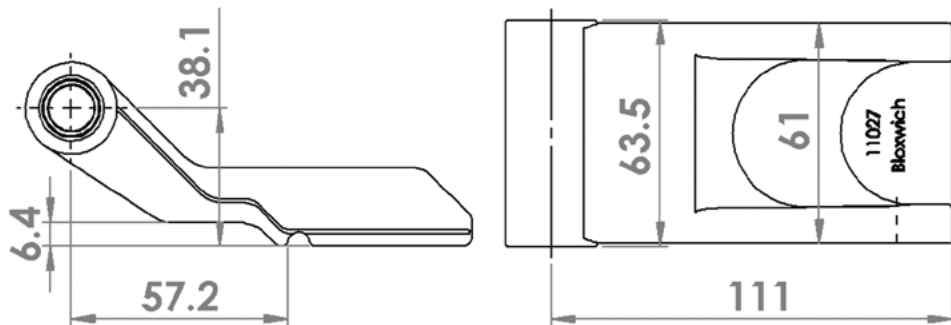
Weight: 860 g



Finish	*	Bush No.	*	Oil Hole/Grease Nipple Position	*	Nipple	*
Self Colour	S	BCP 10040	A	None	1	None	
				Vertical			
				Horizontal			
Zinc	Z	BCP 12119	C	45°	3	BCP 12595 Mild Steel	N
				135°			
				180°			
					4	BCSP 12595 Stainless Steel	NSS
					5	Steel	

*When ordering, please add the above 'characters' to the part number to indicate required condition, e.g. BCP11027SA1N indicates self colour with BCP10040 bush, vertical oil hole and BCP12595 mild steel grease nipple.

Please refer to the oil hole/grease nipple positions and bush options illustrations at the beginning of the section for more information.



Model No. BCP13993 (Mild Steel) Forged Steel Door Hinge 115mm

Supplied in: Self colour or zinc plated

Use: Weld on hinge, un-bushed Ø15 or bushed to suit Ø12.7 hinge pin or 1/2" bolt. See table for options

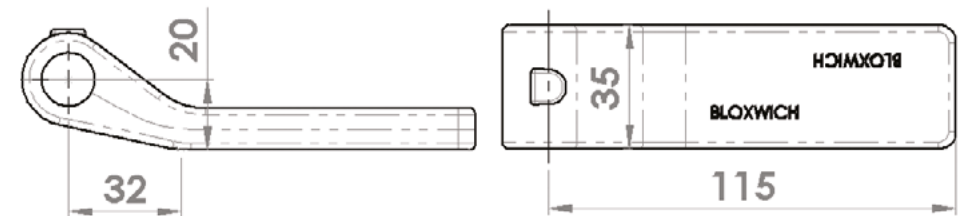
Weight: 475 g



Finish	*	Bush No.	*	Oil Hole/Grease Nipple Position	*	Nipple	*
Self Colour	S	Un-bushed		None		None	
Zinc	Z	BCP 10040	A	Vertical	1	BCP 12595 Mild Steel	N
						BCSP 12595 Stainless Steel	NSS
						Steel	

*When ordering, please add the above 'characters' to the part number to indicate required condition, e.g. BCP13993SA1N indicates self colour with BCP10040 bush, vertical oil hole and BCP12595 mild steel grease nipple.

Please refer to the oil hole/grease nipple positions and bush options illustrations at the beginning of the section for more information.



Model No. BCP11026 (Mild Steel) Model No. BCSP11026#(Stainless Steel) Forged Steel Door Hinge 130mm



Supplied in: Self colour or zinc plated

Use: Weld on hinge, bushed to suit Ø12.7 hinge pin or 1/2" bolt. See table for options

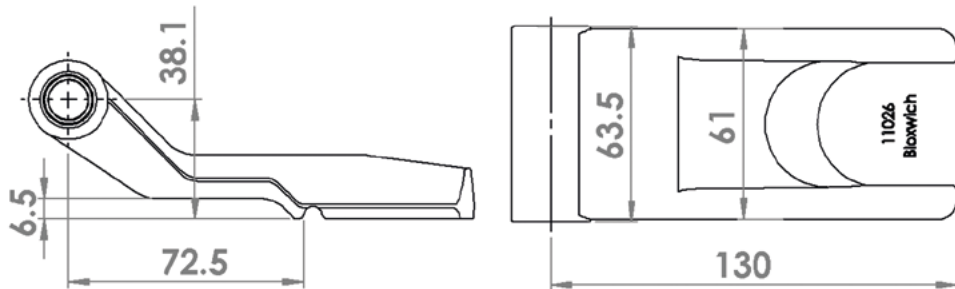
Weight: 940 g

#Subject to quantity and lead time

Finish	*	Bush No.	*	Oil Hole/Grease Nipple Position	*	Nipple	*
Self Colour	S	BCP 10040	A	None	1	None	
				Vertical			
				Horizontal			
Zinc	Z	BCP 12119	C	45°	3	BCP 12595 Mild Steel	N
				135°			
				180°			
Zinc	Z	BCP 12119	C	45°	4	BCSP 12595 Stainless Steel	NSS
				135°			
				180°			

*When ordering, please add the above 'characters' to the part number to indicate required condition, e.g. BCP11026SA1N indicates self colour with BCP10040 bush, vertical oil hole and BCP12595 mild steel grease nipple.

Please refer to the oil hole/grease nipple positions and bush options illustrations at the beginning of the section for more information.



Model No. BCP11026DM (Mild Steel) Forged Steel Door Hinge 130mm



Supplied in: Self colour or zinc plated

Use: Weld on flat back design, bushed to suit Ø12.7 hinge pin or 1/2" bolt.

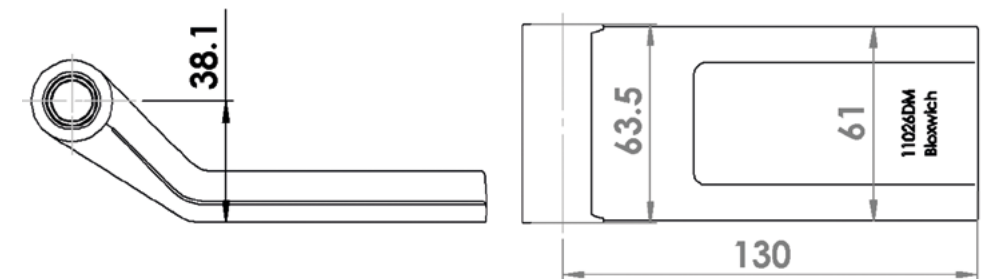
Not recommended for use on offshore container main doors. See table for options

Weight: 940 g

Finish	*	Bush No.	*	Oil Hole/Grease Nipple Position	*	Nipple	*
Self Colour	S	BCP 10040	A	None	1	None	
				Vertical			
				Horizontal			
Zinc	Z	BCP 12119	C	45°	3	BCP 12595 Mild Steel	N
				135°			
				180°			
Zinc	Z	BCP 12119	C	45°	4	BCSP 12595 Stainless Steel	NSS
				135°			
				180°			

*When ordering, please add the above 'characters' to the part number to indicate required condition, e.g. BCP11026DMA1N indicates self colour with BCP10040 bush, vertical oil hole and BCP12595 mild steel grease nipple.

Please refer to the oil hole/grease nipple positions and bush options illustrations at the beginning of the section for more information.



Model No. BCP11292 (Mild Steel) Forged Steel Door Hinge 150mm

Supplied in: Self colour or zinc plated

Use: Weld on hinge, bushed to suit Ø12.7 hinge pin or 1/2" bolt. See table for options

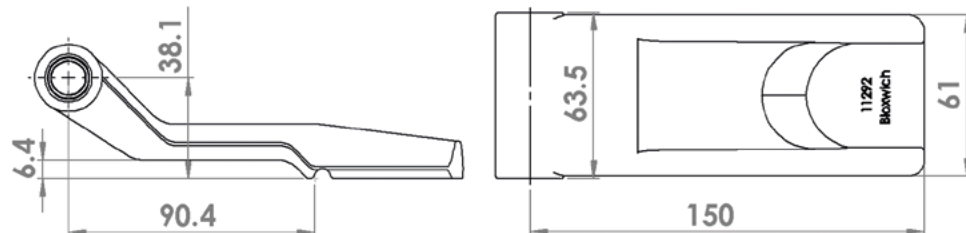
Weight: 1.12 kg



Finish	*	Bush No.	*	Oil Hole/Grease Nipple Position	*	Nipple	*
Self Colour	S	BCP 10040	A	None	1	None	
				Vertical			
				Horizontal			
Zinc	Z	BCP 12119	C	45°	3	BCP 12595 Mild Steel	N
				135°			
				180°			
Zinc	Z	BCP 12119	C	45°	3	BCSP 12595 Stainless Steel	NSS
				135°			
				180°			

*When ordering, please add the above 'characters' to the part number to indicate required condition, e.g. BCP11292SA1N indicates self colour with BCP10040 bush, vertical oil hole and BCP12595 mild steel grease nipple.

Please refer to the oil hole/grease nipple positions and bush options illustrations at the beginning of the section for more information.



Model No. BCP10524 (Mild Steel) Forged Steel Door Hinge 203mm

Supplied in: Self colour or zinc plated

Use: Weld on hinge, bushed to suit Ø12.7 hinge pin or 1/2" bolt. See table for options

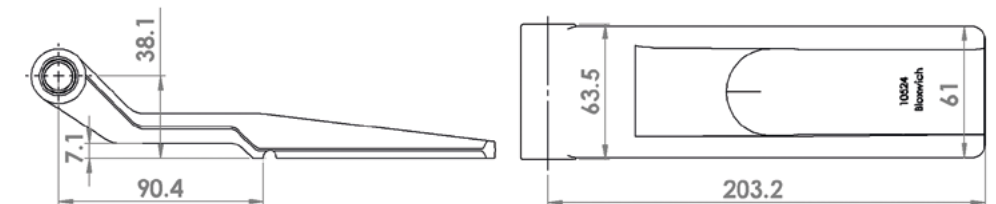
Weight: 1.25 kg



Finish	*	Bush No.	*	Oil Hole/Grease Nipple Position	*	Nipple	*
Self Colour	S	BCP 10040	A	None	1	None	
				Vertical			
				Horizontal			
Zinc	Z	BCP 12119	C	45°	3	BCP 12595 Mild Steel	N
				135°			
				180°			
Zinc	Z	BCP 12119	C	45°	3	BCSP 12595 Stainless Steel	NSS
				135°			
				180°			

*When ordering, please add the above 'characters' to the part number to indicate required condition, e.g. BCP10524SA1N indicates self colour with BCP10040 bush, vertical oil hole and BCP12595 mild steel grease nipple.

Please refer to the oil hole/grease nipple positions and bush options illustrations at the beginning of the section for more information.



Model No. BCP10524DM (Mild Steel) Forged Steel Door Hinge 203mm

Supplied in: Self colour or zinc plated

Use: Weld on flat back design, bushed to suit Ø12.7 hinge pin or 1/2" bolt.

Not recommended for use on offshore container main doors. See table for options

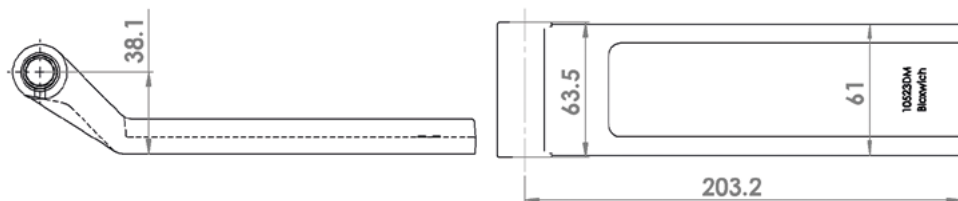
Weight: 1.25 kg



Finish	*	Bush No.	*	Oil Hole/Grease Nipple Position	*	Nipple	*
Self Colour	S	BCP 10040	A	None	1	None	
				Vertical			
				Horizontal			
Zinc	Z	BCP 12119	C	45°	3	BCP 12595 Mild Steel	N
				135°			
				180°	5	BCSP 12595 Stainless Steel	NSS

*When ordering, please add the above 'characters' to the part number to indicate required condition, e.g. BCP10524DMA1N indicates self colour with BCP10040 bush, vertical oil hole and BCP12595 mild steel grease nipple.

Please refer to the oil hole/grease nipple positions and bush options illustrations at the beginning of the section for more information.



Model No. BCP10045 (Mild Steel) Model No. BCSP10045# (Stainless Steel) Forged Steel Door Hinge 305mm

Supplied in: Self colour, zinc plated, galvanised or polyester

Use: Weld or bolt on hinge, bushed to suit Ø12.7 hinge pin or 1/2" bolt, Ø10.5 fixing holes. See table for options

Weight: 1.58 kg

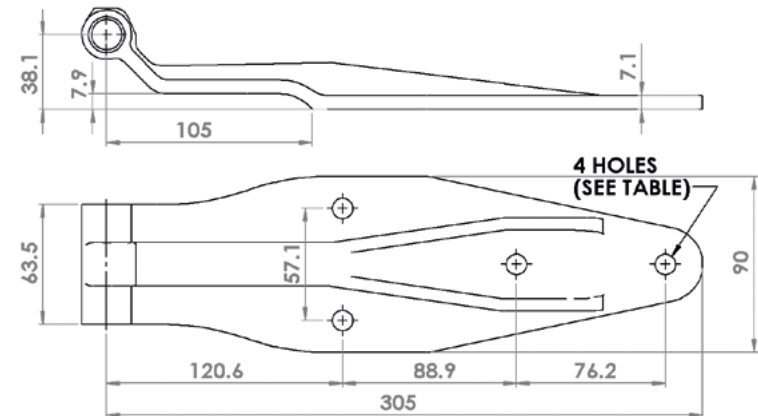


#Subject to quantity and lead time

Hole	*	Finish	*	Bush No.	*	Oil Hole/Grease Position	*	Nipple	*
10.5	B	Self Colour	S	BCP 10040	A	None	1	None	
						Vertical			
		Horizontal							
	C	Zinc	Z	BCP 12595 Mild Steel	45°	3	BCP 12595 Mild Steel	N	
					135°				
					180°				
C	Galvanised	G	BCP 12119	45°	3	BCSP 12595 Stainless Steel	NSS		
				135°					
				180°					
C	Polyester	P	BCP 12119	45°	3	BCSP 12595 Stainless Steel	NSS		
				135°					
				180°					

*When ordering, please add the above 'characters' to the part number to indicate required condition, e.g. BCP10045BZC1N indicates Ø10.5 fixing hole, zinc plated with BCP12119 bush, vertical oil hole and BCP12595 mild steel grease nipple.

Please refer to the oil hole/grease nipple positions and bush options illustrations at the beginning of the section for more information.



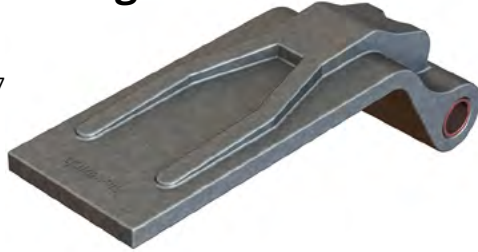
Model No. BCP1008-1 (Mild Steel) Forged Steel Reverse Door Hinge 165mm

Supplied in: Self colour or zinc plated

Use: Weld on reverse hinge bushed, to suit Ø12.7 hinge pin or 1/2" bolt. See table for options

For use on sealed or unsealed lids or hatches, reduces the overall height, can be used/ordered with the BCP 1008-2 hinge bracket

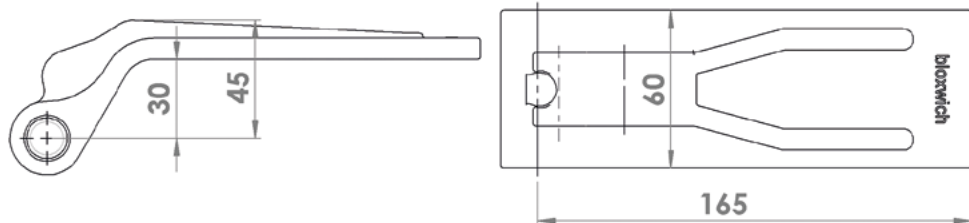
Weight: 1.03 kg



Finish	*	Bush No.	*	Oil Hole/Grease Nipple Position	*	Nipple	*
Self Colour	S	BCP 10040	A	None	1	None	
				Vertical			
				Horizontal			
Zinc	Z	BCP 12119	C	45°	3	BCP 12595 Mild Steel	N
				135°			
				180°			
					4	BCSP 12595 Stainless Steel	NSS
					5		

*When ordering, please add the above 'characters' to the part number to indicate required condition, e.g. BCP1008-1SA1N indicates self colour with BCP10040 bush, vertical oil hole and BCP12595 mild steel grease nipple.

Please refer to the oil hole/grease nipple positions and bush options illustrations at the beginning of the section for more information.



Model No. BCP12594 (Mild Steel) Model No. BCSP12171 (Stainless Steel) Pressed Hinge 295mm

Supplied in: (Mild Steel only) self colour, zinc plated, galvanised or polyester and 304 stainless steel

Use: Bolt on hinge, bushed to suit Ø12 hinge pin or M12 bolt or Ø12.7 hinge pin or 1/2" bolt or, Ø10.5 or Ø8.5 fixing holes. See table for options

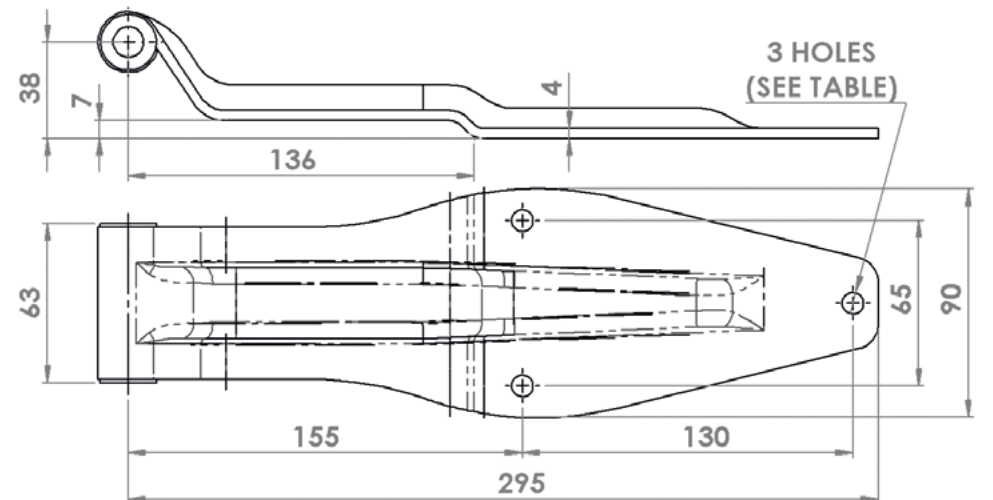
Weight: 620 g



Hole Ø	*	Logo	*	Finish	*	Bush No.	ID	*
10.5	B	Customer logos are available subject to minimum order quantities.	O	Self Colour	S	BCP 12456	12.0	D
				Zinc	Z			
				Galvanise	G			
8.5	A			Polished	V	BCP 12194	12.7	B
				Polyester	P			

*When ordering, please add the above 'characters' to the part number to indicate required condition, e.g. BCP12594BOZD indicates mild steel hinge, Ø10.5 fixing holes, no logo, zinc plated with BCP12456 bush.

For stainless steel version please quote BCSP12171BOVD



Model No. **BCP15073** (Mild Steel)
 Model No. **BCSP15073** (Stainless Steel)
Pressed Hinge 295mm



Supplied in: (Mild Steel only) self colour, zinc plated, galvanised or polyester and 304 stainless steel

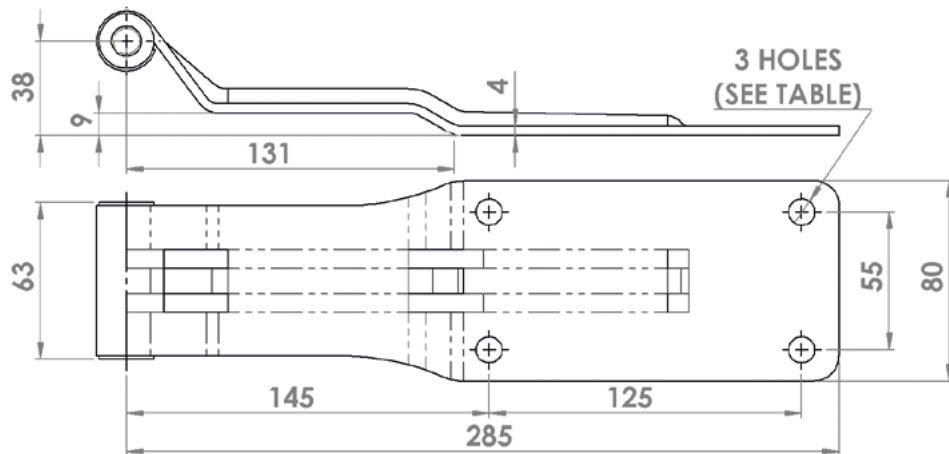
Use: Bolt on hinge, bushed to suit Ø12 hinge pin or M12 bolt or Ø12.7 hinge pin or 1/2" bolt or, Ø10.5 or Ø8.5 fixing holes. See table for options

Weight: 720 g

Hole Ø	*	Logo	*	Finish	*	Bush No.	ID	*
10.5	B	No Logo	O	Self Colour	S	BCP 12456	12.0	D
		Customer logos are available subject to minimum order quantities.		Zinc	Z			
				Galvanise	G			
				Polished	V			
8.5	A			Polyester	P	BCP 12194	12.7	B

*When ordering, please add the above 'characters' to the part number to indicate required condition, e.g. BCP15073BOZD indicates mild steel hinge, 10.5 Ø fixing holes, no logo, zinc plated with BCP12456 bush.

For stainless steel version please quote BCSP15073BOVD



Model No. **BCP13607** (Mild Steel)
 Model No. **BCSP13607** (Stainless Steel)
Pressed Hinge 312mm



Supplied in: (Mild Steel only) self colour, zinc plated, galvanised or polyester and 304 stainless steel. See table for options

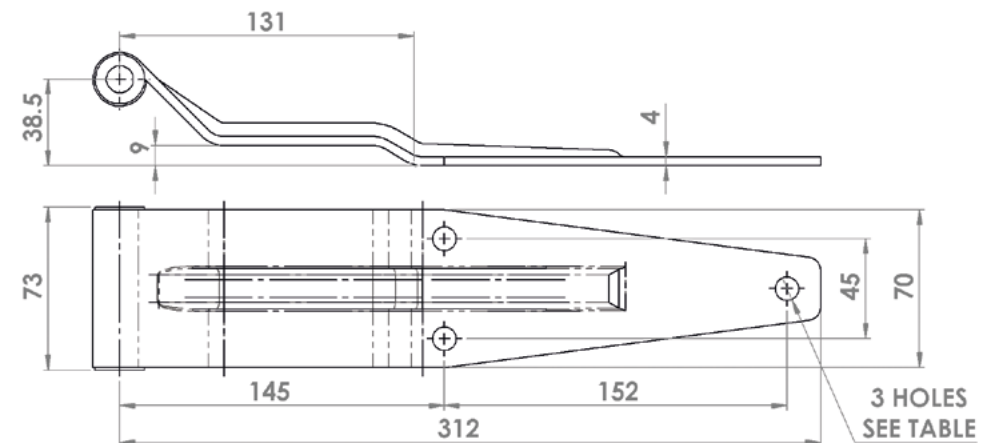
Use: Bolt on hinge, bushed to suit Ø12 hinge pin or 1/2" bolt or, Ø10.5 or Ø8.5 fixing holes

Weight: 765 g

Hole Ø	*	Logo	*	Finish	*	Bush No.	ID	*
10.5	B	No Logo	O	Self Colour	S	BCP 12456	12.0	D
		Customer logos are available subject to minimum order quantities.		Zinc	Z			
				Galvanise	G			
				Polished	V			
8.5	A			Polyester	P	BCP 12194	12.7	B

*When ordering, please add the above 'characters' to the part number to indicate required condition, e.g. BCP13607BOZD indicates mild steel hinge, 10.5 Ø fixing holes, no logo, zinc plated with BCP12456 bush.

For stainless steel version please quote BCSP13607BOVD



Model No. **BCP12447** (Mild Steel)
 Model No. **BCSP12447** (Stainless Steel)
Pressed Hinge 356mm



Supplied in: (Mild Steel only) self colour, zinc plated, galvanised or polyester and 304 stainless steel

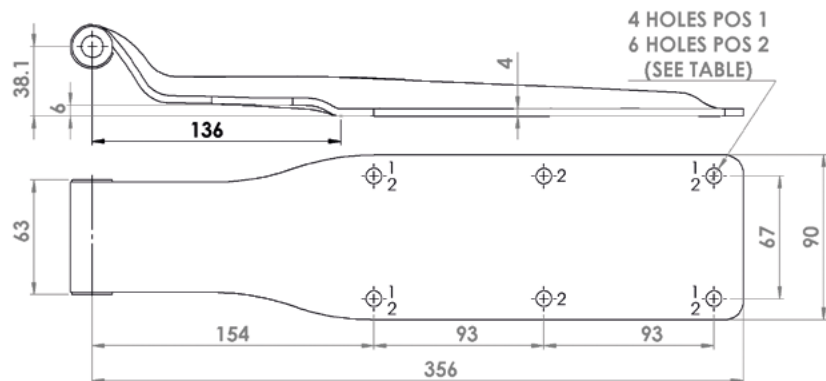
Use: Bushed to suit Ø12 hinge pin or M12 bolt or Ø12.7 hinge pin or 1/2" bolt, Ø10.5 or Ø8.5 fixing holes. See table for options

Weight: 1.2 kg

Hole Ø	*	Logo	*	Finish	*	Bush No.	ID	*
10.5	B4	No Logo	O	Self Colour	S	BCP 12456	12.0	D
	B6	Customer logos are available subject to minimum order quantities.		Zinc	Z			
8.5	A6			Galvanise	G			
				Polished	V			
				Polyester	P	BCP 12194	12.7	B

*When ordering, please add the above 'characters' to the part number to indicate required condition, e.g. BCP12447B4OZD indicates mild steel hinge, with four 10.5 Ø fixing holes, no logo, zinc plated with BCP12456 bush.

For stainless steel version please quote BCSP12447BOVD



Model No. **BCP** (Mild Steel)
Forged Hinge Bolted Assemblies



Supplied in: Self colour

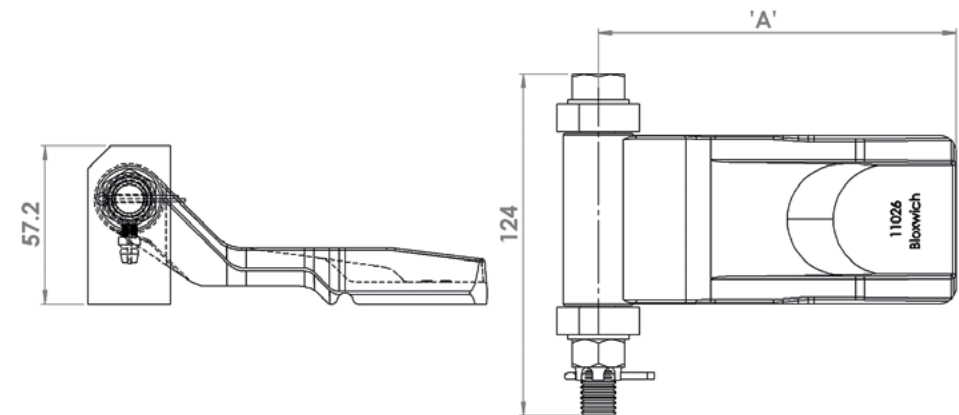
Other combinations available on request please contact us for further details

Use: For containers, parts supplied assembled ready to weld in place

All combinations use the BCP15111 hinge butt, BCSP15121 bolt, BCSP15133 flat washers, BCSP15128 castle nut, BCSP15127 cotter pin and BCP12595 grease nipple fitted in position 5

Weight: See table

Model	Hinge	Handing	"A"	Weight
BCP 15113	BCP11026SC5N	LH	130	1.4 kg
BCP 15114	BCP11292SC5N	LH	150	1.5 kg
BCP 15115	BCP10524SC5N	LH	203	1.7 kg
BCP 15117	BCP11026SC5N	RH	130	1.4 kg
BCP 15118	BCP11292SC5N	RH	150	1.5 kg
BCP 15119	BCP10524SC5N	RH	203	1.7 kg



Model No. BCP (Mild Steel) Forged Hinge Welded Assemblies

Supplied in: Self colour

Other combinations, oil hole/grease nipple positions and bush options available on request please contact us for further details

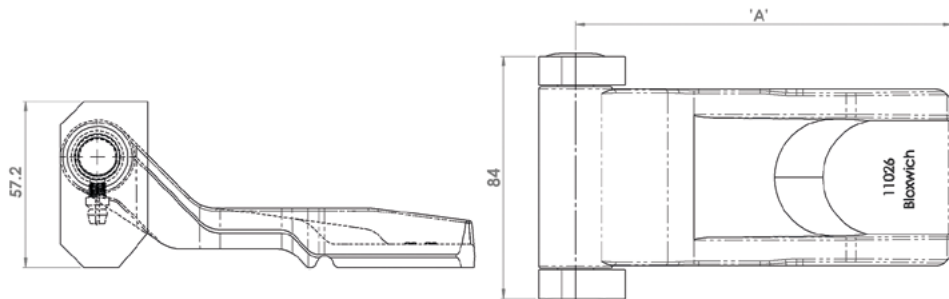
Use: For containers, parts supplied assembled ready to weld in place

All combinations use the BCP15034 hinge butt, BCSP-24001/82 hinge pin and BCP12595 grease nipple fitted in position 5

Weight: See table



Model	Hinge	"A"	Weight
BCP14884SC5N	BCP11027SC5N	111	1.25 kg
BCP14467SC5N	BCP11026SC5N	130	1.3 kg
BCP14883SC5N	BCP11292SC5N	150	1.4 kg
BCP14476SC5N	BCP10524SC5N	203	1.6 kg



Model No. BCP (Mild Steel) Model No. BCSP (Stainless Steel) Pressed Hinge Assemblies

Supplied in: (Mild Steel only) self colour, zinc plated, galvanised or polyester and 304 stainless steel

Other combinations available on request please contact us for further details

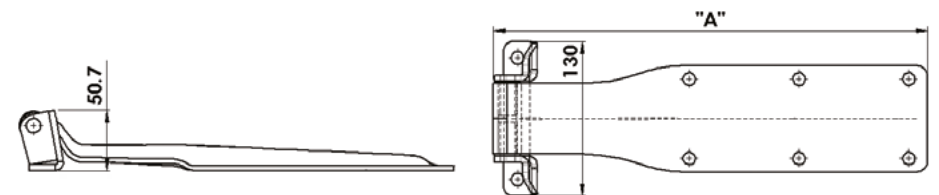
Use: Parts supplied in unassembled kits to make ordering easier

See the individual parts listed below for dimensions

Weight: See table



Model	Hinge	Bracket	Bolt/Pin	Nut/E Clip	"A"	Weight
BCP14242G	BCP12594BOGD	BCP14149	BCP12463	BCP12462	307	1.1 kg
BCP14242Z	BCP12594BOZD	BCP14149	BCP12463	BCP12462	307	1.1 kg
BCP15105	BCP15073BOZD	BCP14149	BCP12463	BCP12462	297	1.1 kg
BCP15108	BCP13607BOZD	BCP15100	BCP12463	BCP12462	324	1.1 kg
BCP15109	BCP12447A6ZD	BCP14149	BCP12463	BCP12462	368	1.2 kg
BCP15110	BCP12594BOZD	BCP14149	BCP12463	BCP12462	307	1.1 kg
BCSP15105	BCSP15073BOVD	BCSP14149	BCSP12463	BCSP12462	297	1.1 kg
BCSP15108	BCSP13607BOVD	BCSP15100	BCSP12463	BCSP12462	324	1.1 kg
BCSP15109	BCSP12447A6OV2D	BCSP14149	BCSP12463	BCSP12462	368	1.2 kg
BCSP15110	BCSP12171BOVD	BCSP14149	BCSP12463	BCSP12462	307	1.1 kg

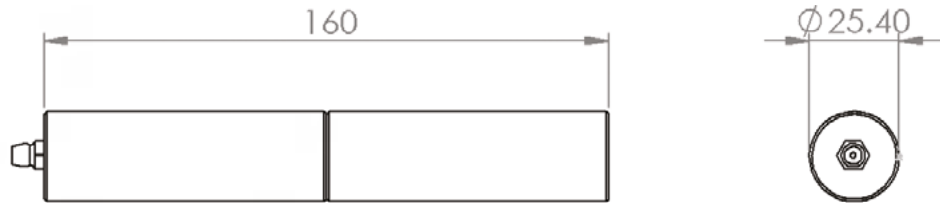


Model No. **BCSP16014#** (Stainless Steel) Barrel Hinge Assembly

Supplied in: Electro polished finish

Use: Serviceable lift off* barrel hinge with grease nipple, fabricated and welded from 304 stainless steel. Length can be tailored to suit your designs. *Depending upon mounting arrangement. #Subject to quantity and lead time

Weight: 625 g

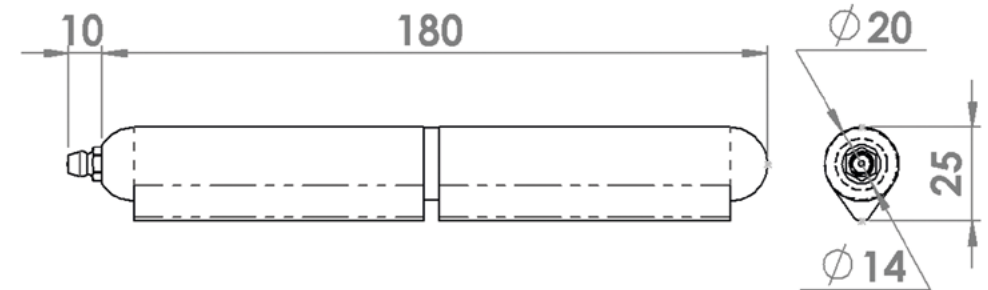


Model No. **BCP16014** (Mild Steel) Barrel Hinge Assembly 180mm

Supplied in: Self colour

Use: Serviceable lift off* barrel hinge with grease nipple. *Depending upon mounting arrangement

Weight: 470 g

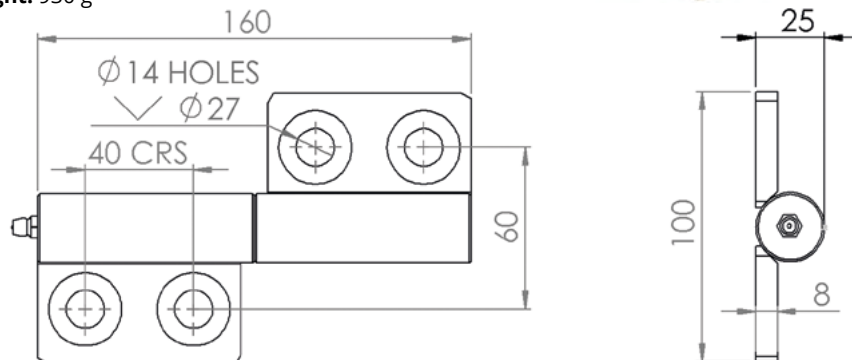


Model No. **BCSP14499#** (Stainless Steel) Barrel Hinge Assembly

Supplied in: Electro polished finish

Use: Serviceable lift off* barrel hinge with grease nipple, fabricated and welded from 304 stainless steel. Length can be tailored to suit your designs. *Depending upon mounting arrangement. #Subject to quantity and lead time

Weight: 930 g

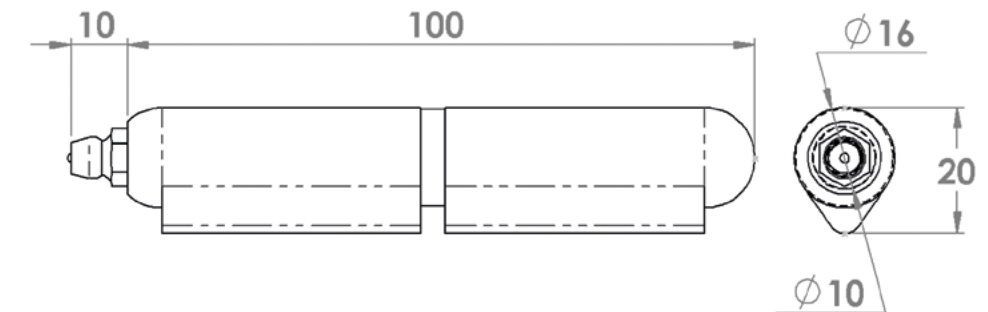


Model No. **BCP16015** (Mild Steel) Model No. **BCSP16015** (Stainless Steel) Barrel Hinge Assembly 100mm

Supplied in: Self colour

Use: Serviceable lift off* barrel hinge with grease nipple. *Depending upon mounting arrangement

Weight: 170 g



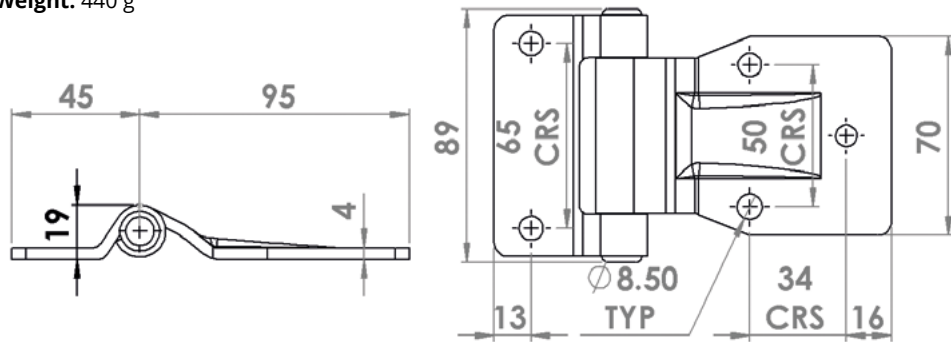
Model No. BCSP13302-AOV-MB Hinge Assembly 95mm

Supplied in: 304 stainless steel electro-polished finish

Use: General purpose pressed stainless steel hinge assembly

No hole, square hole and other Ø hole sizes available on request# please contact us for details

Weight: 440 g



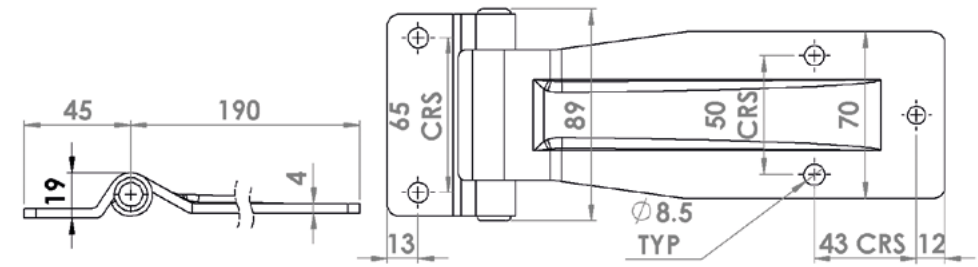
Model No. BCSP13302-AOV-M Hinge Assembly 190mm

Supplied in: 304 stainless steel electro-polished finish

Use: General purpose pressed stainless steel hinge assembly

No hole, square hole and other Ø hole sizes available on request# please contact us for details

Weight: 650 g



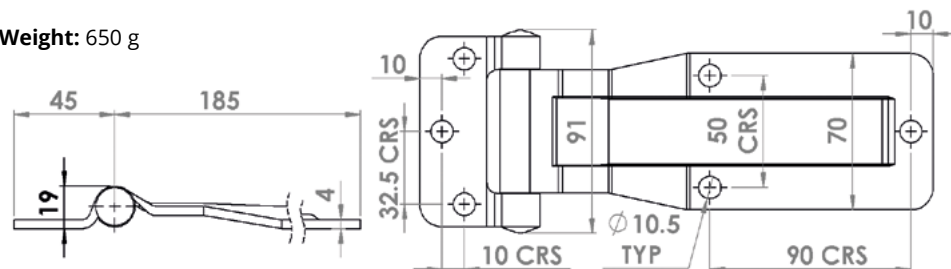
Model No. BCP13302BOZ (Mild Steel) Model No. BCSP13302-BOV (Stainless Steel) Hinge Assembly 185mm

Supplied in: Mild steel zinc plated or 304 stainless steel electro-polished finish

Use: General purpose pressed mild steel or stainless steel hinge assembly

No hole, square hole and other Ø hole sizes available on request# please contact us for details

Weight: 650 g

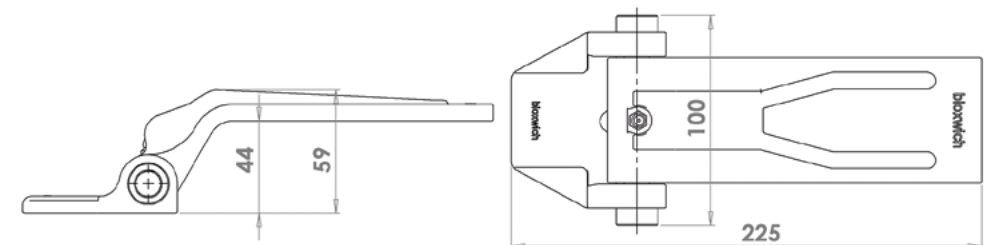


Model No. BCP1008 (Mild Steel) Reverse Hinge Assembly 165mm

Supplied in: Self colour or zinc plated

Use: On sealed or unsealed lids or hatches, reduces the overall height

Weight: 1.5 kg

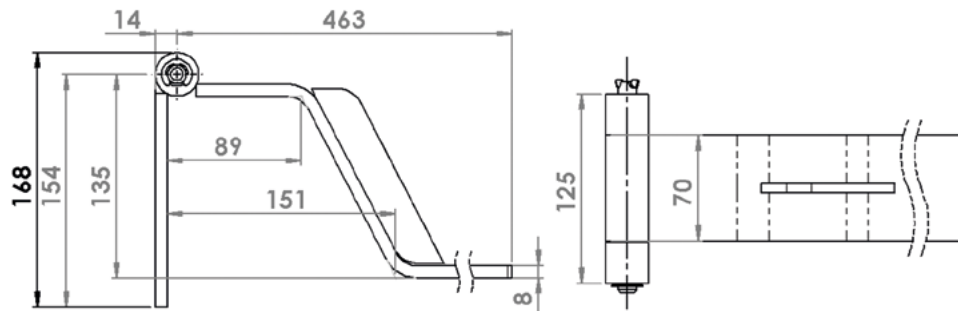
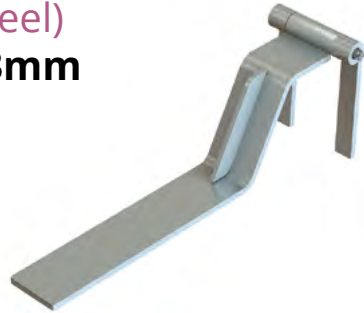


Model No. **BCP13020Z** (Mild Steel) **Cranked Hinge Assembly 463mm**

Supplied in: Zinc plated finish as standard

Use: For rear doors where tail lifts are fitted and doors are recessed into end frame

Weight 3.3 kg

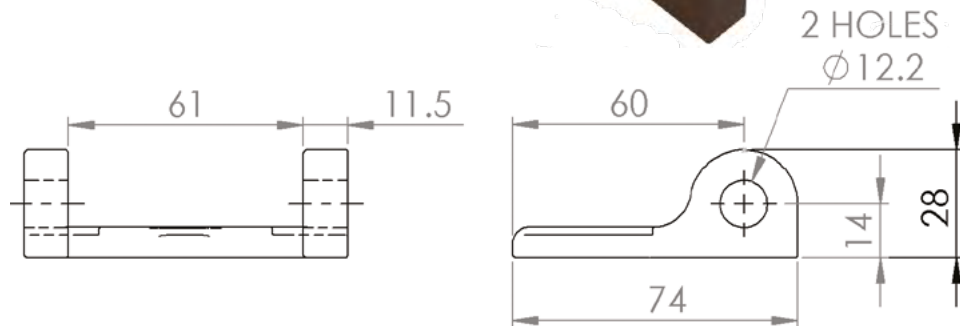


Model No. **BCP1008-2** (Mild Steel) **Hinge Bracket**

Supplied in: Self colour, zinc plated or galvanized

Use: With the BCP1008-1 reverse hinge on sealed or unsealed lids or hatches, reduces the overall height

Weight: 300 g

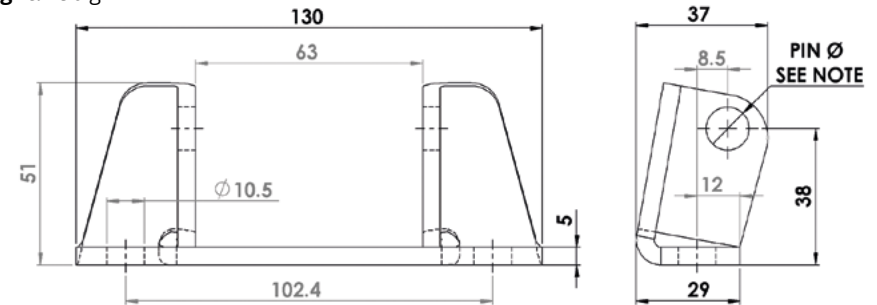
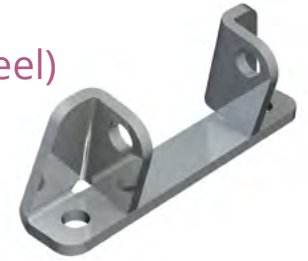


Model No. **BCP14149** (Mild Steel) Model No. **BCSP14149** (Stainless Steel) **Hinge Bracket 63mm (Offset)**

Supplied in: Mild steel self colour, zinc plated or galvanized and 304 stainless steel

Use: Pivot hole size to suit M12 bolt or Ø12 hinge pin or 1/2 version suits 1/2" bolt or Ø12.7 hinge pin. Replaces fabricated BCP12228 hinge bracket

Weight: 290 g

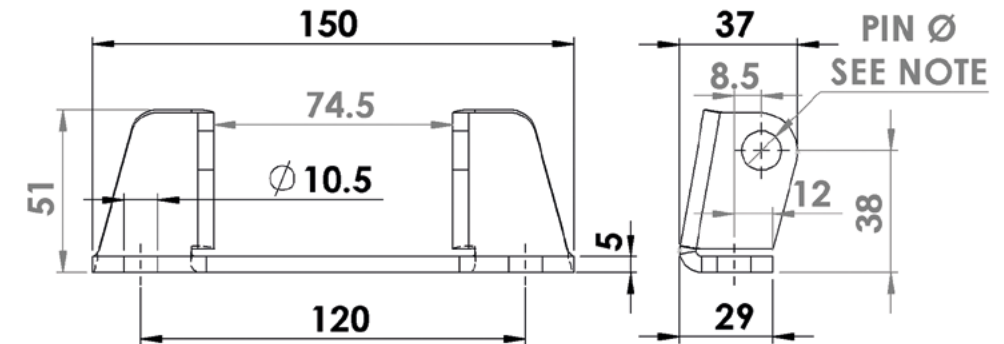
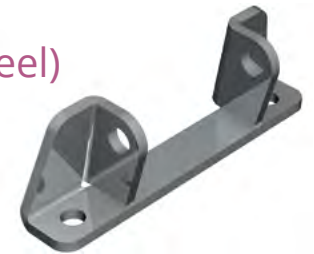


Model No. **BCP15100** (Mild Steel) Model No. **BCSP15100** (Stainless Steel) **Hinge Bracket 74mm (Offset)**

Supplied in: Mild steel self colour, zinc plated or galvanized and 304 stainless steel

Use: Pivot hole size to suit M12 bolt or Ø12 hinge pin

Weight: 290 g

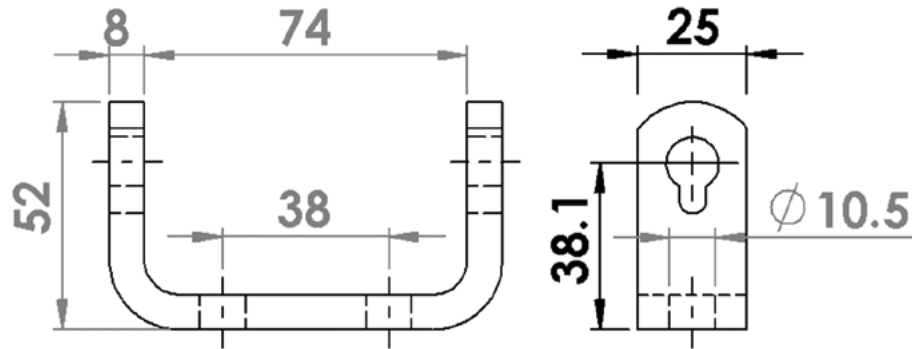


Model No. **BCP13608B** (Mild Steel)
 Model No. **BCSP13608B** (Stainless Steel)
Hinge Bracket 74mm

Supplied in: Mild steel self colour, zinc plated or galvanised and 304 stainless steel

Use: Pivot hole size to suit M12 bolt or Ø12 hinge pin.

Weight: 230 g

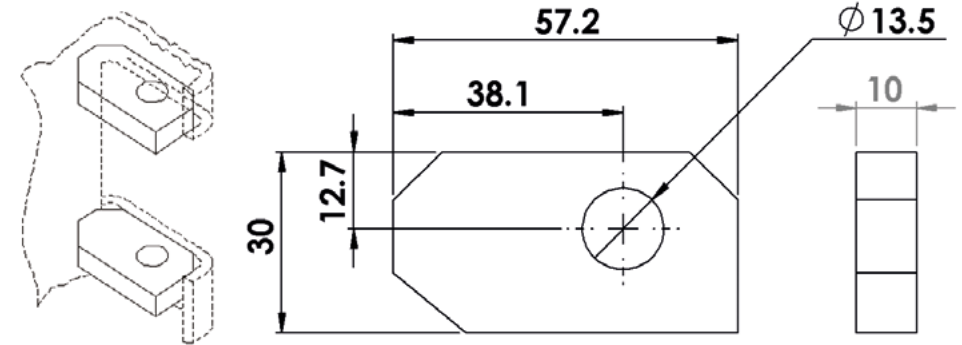
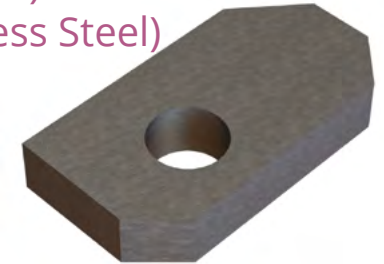


Model No. **BCP11354** (Mild Steel)
 Model No. **BCSP11354#** (Stainless Steel)
Hinge Butt (standard)

Supplied in: Self colour

Use: On with all Bloxwich hinges, commonly used on containers. Other sizes available on request. #Subject to quantity and lead time

Weight: 114 g

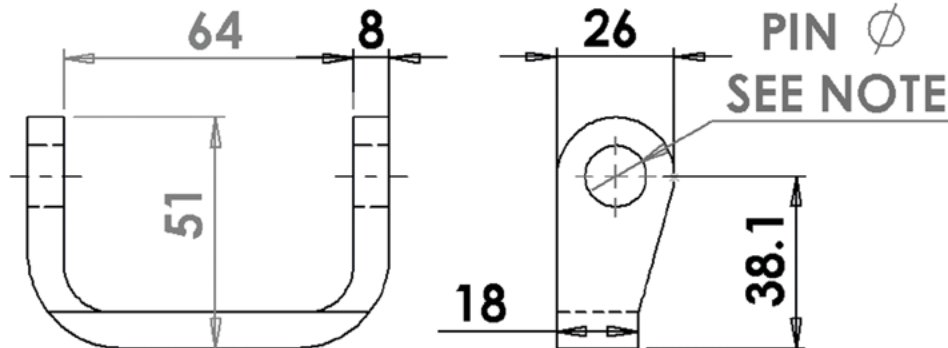


Model No. **BCP12459** (Mild Steel)
Hinge Bracket 64mm (Offset)

Supplied in: Self colour, zinc plated or galvanised

Use: /1 pivot hole size to suit M12 bolt or Ø12 hinge pin or /2 version suits 1/2" bolt or Ø12.7 hinge pin.

Weight: 170 g

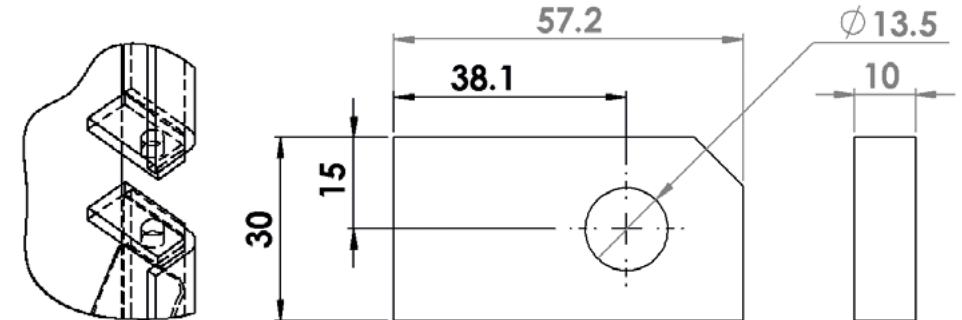
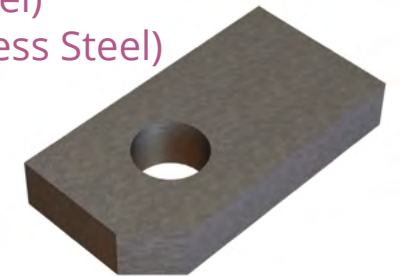


Model No. **BCP15111** (Mild Steel)
 Model No. **BCSP15111#** (Stainless Steel)
Hinge Butt (special)

Supplied in: Self colour

Use: On all Bloxwich hinges, gives increased clearance for bolting when required. Other sizes available on request. #Subject to quantity and lead time

Weight: 120 g



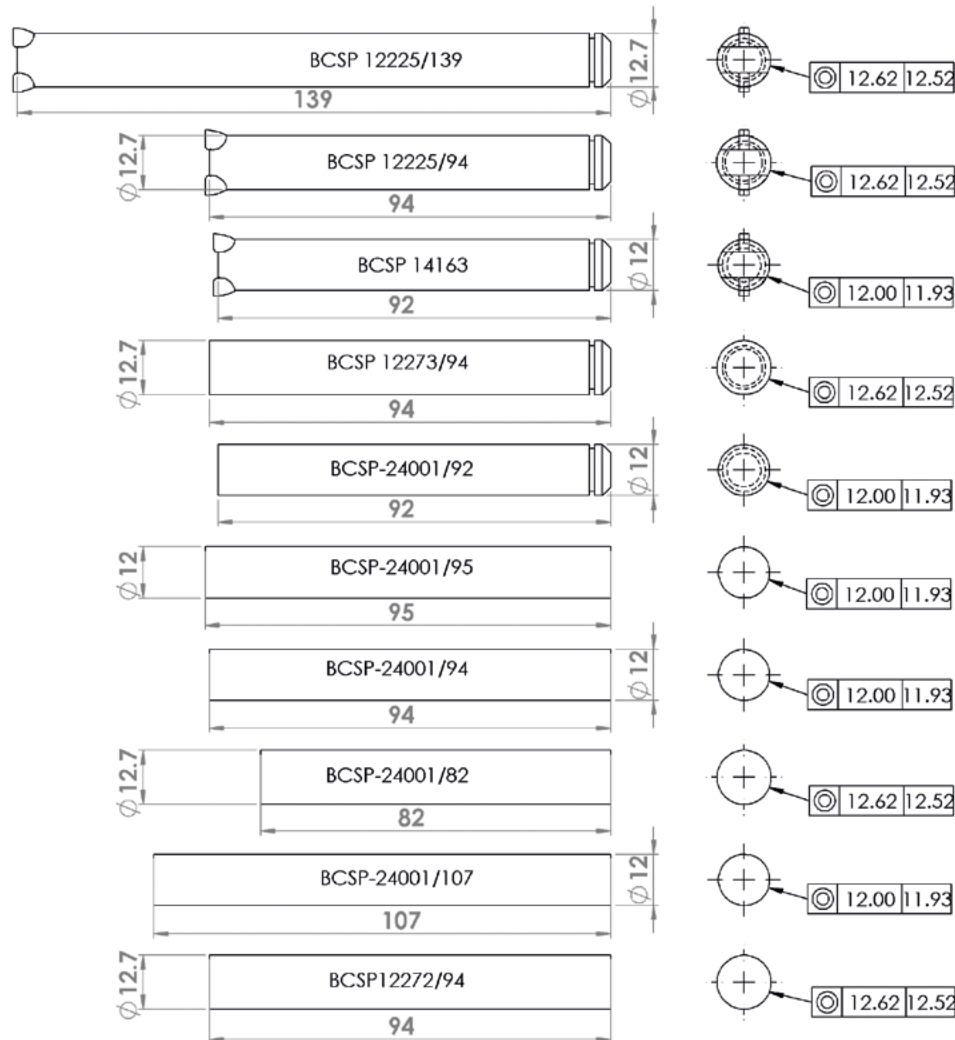
Model No. BCSP Hinge Pins

Supplied in: 304 stainless steel except BCSP12272/94 which is 316 stainless steel. Other pins available, please contact us for details



Use: With Bloxwich hinges, butts and brackets

Average **Weight:** 90 g

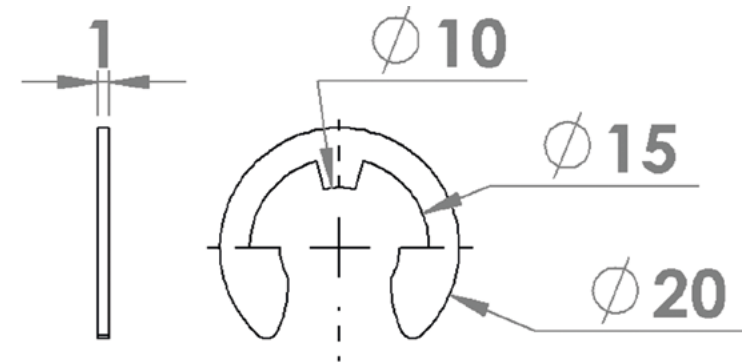


Model No. BCSP14164 E Clip

Supplied in: 304 stainless steel

Use: With Bloxwich hinge pins BCSP12225/94, BCSP14163, BCSP12273/94 and BCSP24001/92

Weight: 1 g

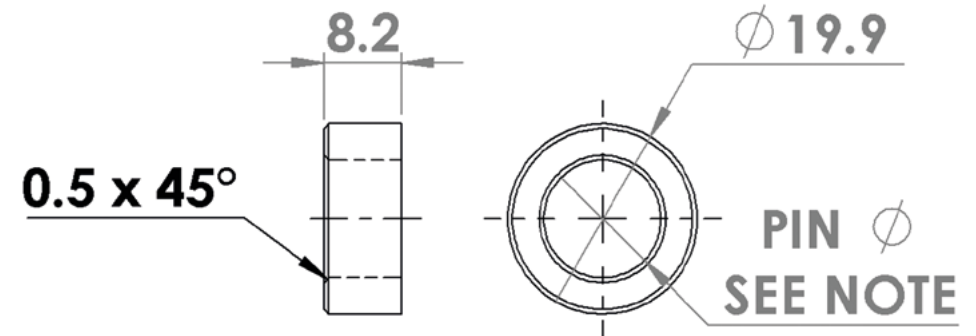
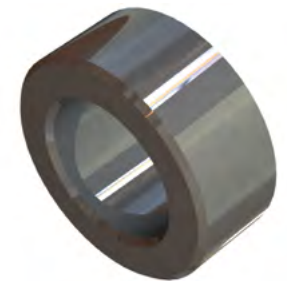


Model No. BCSP12336 Hinge Pin Collar

Supplied in: 304 stainless steel

Use: With Bloxwich uncrimped hinge pins, /20 hole size to suit Ø12 hinge pin or M/20 version suits Ø12.7 hinge pin

Weight: 13 g

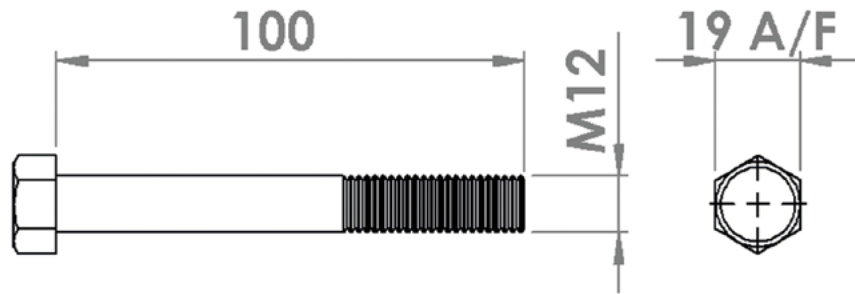
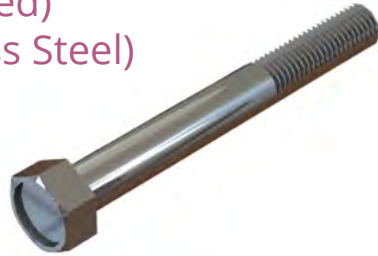


Model No. **BCP12463** (Zinc Plated)
 Model No. **BCSP12463** (Stainless Steel)
M12 Bolt

Supplied in: Mild steel zinc plated or 304 stainless steel

Use: With Bloxwich hinges, butts and brackets

Weight: 96 g

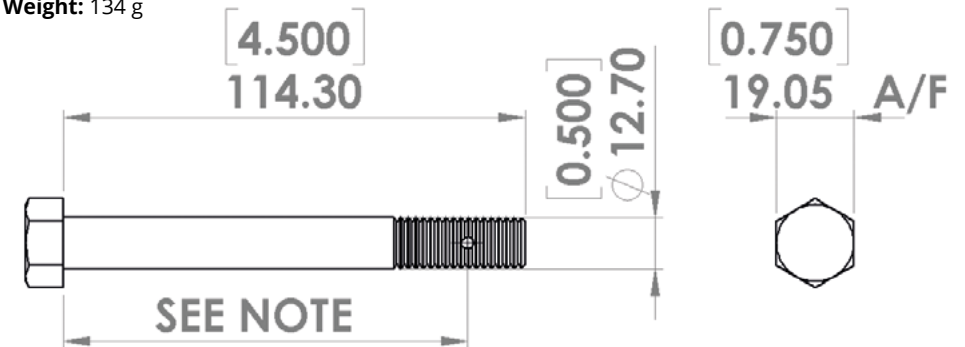


Model No. **BCSP15121**
1/2"-13 UNC Bolt

Supplied in: 304 stainless steel

Use: With Bloxwich hinges, butts and brackets. Hole position drilled to order (if required). Can be used with 1/2"-13 UNC castle and cotter pin to lock the pin securely but also allows easy removal for maintenance.

Weight: 134 g

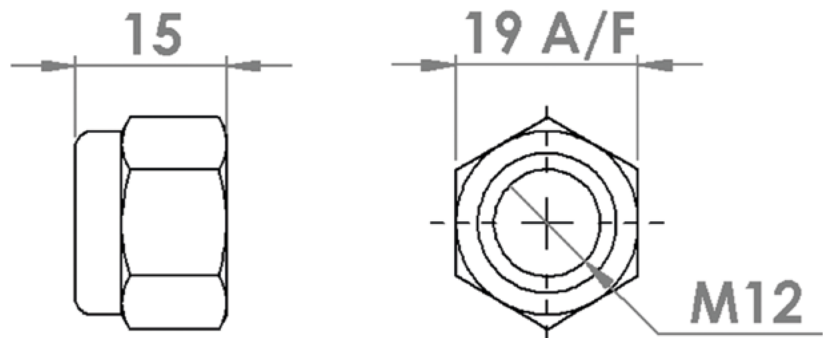
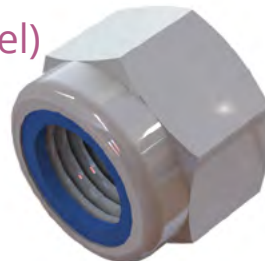


Model No. **BCP12462** (Zinc Plated)
 Model No. **BCSP12462** (Stainless Steel)
M12 Nyloc Nut

Supplied in: Mild steel zinc plated or 304 stainless steel

Use: With Bloxwich hinges, butts and brackets

Weight: 10 g



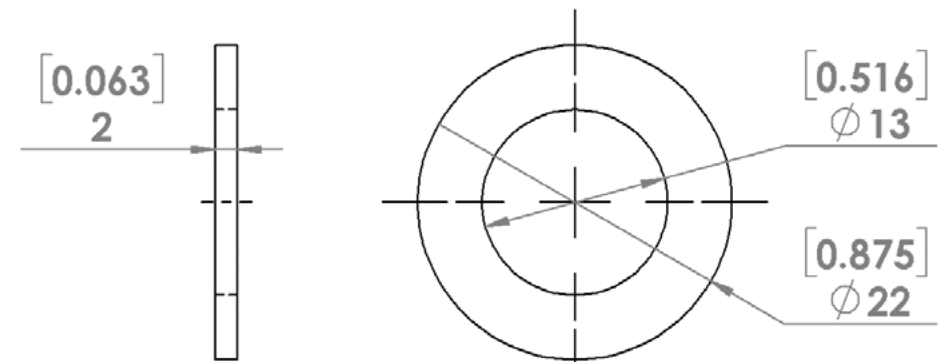
Model No. **BCSP15133**
1/2" UNC Flat Washer

Supplied in: 304 stainless steel

Use: With Bloxwich hinges, butts and brackets.

Reduces paintwork damage on assembly.

Weight: 3 g

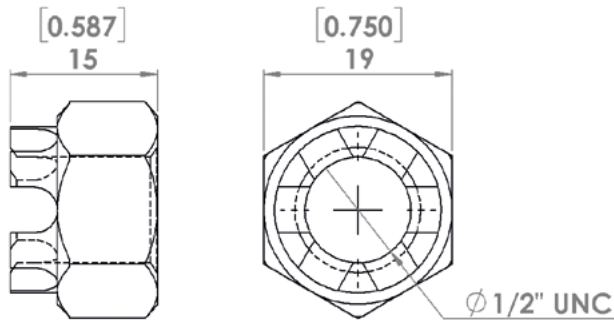


Model No. BCSP15128 1/2"-13 UNC Castle Nut

Supplied in: 304 stainless steel

Use: With Bloxwich hinges, butts and brackets. Can be used with 1/2"-13 UNC bolt and cotter pin to lock the pin securely but also allows easy removal for maintenance.

Weight: 20 g

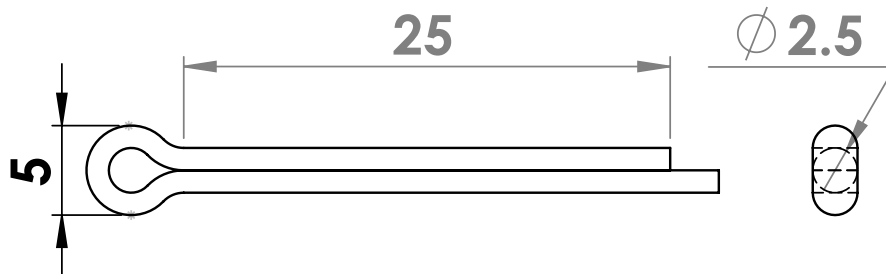


Model No. BCSP 15127 Ø2.5 x 25 Cotter Pin

Supplied in: 304 stainless steel

Use: With Bloxwich hinges, butts and brackets. Can be used with 1/2" UNC bolt and castle nut to lock the pin securely but also allows easy removal for maintenance.

Weight: 1 g



Combining SolidWorks Professional, Visualise, Composer, Adobe Photoshop and InDesign software etc with decades of experience in DNV & ISO container design, test and manufacture we can create designs, drawings, animations, user manuals and carry out consultancy work.

For more information please see www.bloxwichtrading.com, call +44 (0)1543 435 160 or email technical@bloxwichgroup.com

