

Truck

In this section we offer products commonly used on HGV and LGV including over-centre locks, mudwing stays, king pin locks, steps and roller buffers but some products listed in other sections may also be used on trucks and trailers e.g. twistlocks.

We will be pleased to give detailed advice, but the following points should be considered:

- Mudwing stays are all made from $\varnothing 34$ mm tube but can be supplied straight or cranked and with stud or spigot fixings.
- King pin and anti-hitch locks are primarily used for security purposes but they can also be used for maintenance purposes to lockout and prevent the unauthorised use of trailers awaiting repair or test etc
- For more information and dimensions please visit <https://www.bloxwichdoorgear.com>

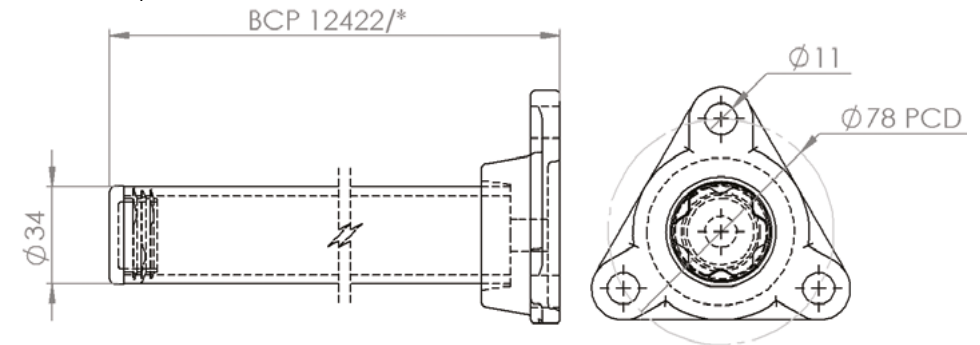
Model No. BCP12422

Mud Wing Stay Spigot Fixing–Straight Tube

Supplied in: Self colour (S), zinc plate (Z) or galvanised (G)

$\varnothing 34$ tube length as required

When ordering, add length and finish symbols as suffix to above part no e.g. BCP 12422/800Z gives 800mm overall length finished zinc plate.



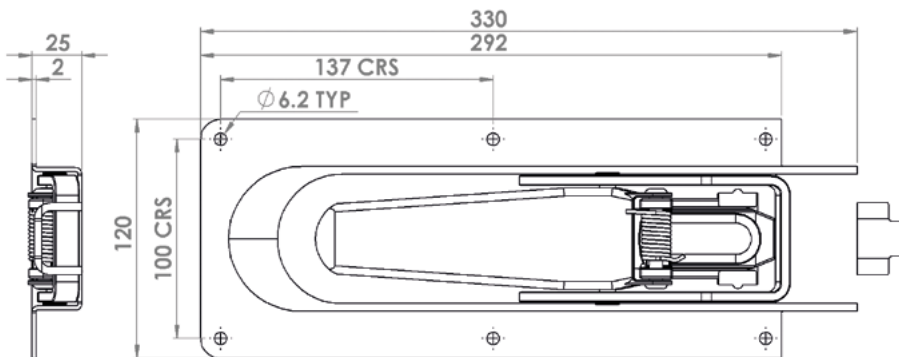
Model No. BCP14331

Over-Centre Lock c/w Fixing Lug

Supplied in: Mild steel zinc plated

Use: To secure trailer or vehicle drop sides

Weight: 1.4 kg



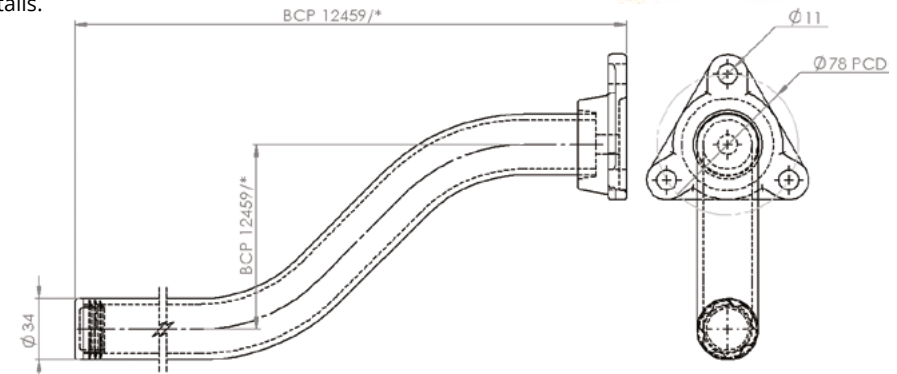
Model No. BCP12549

Mud Wing Stay Spigot Fixing–Cranked Tube

Supplied in: Self colour (S), zinc plate (Z) or galvanised (G)

$\varnothing 34$ tube length and crank as required

When ordering, add length and finish symbols as suffix to above part no e.g. BCP 12549/800Z gives 800mm overall length finished zinc plate and please contact us to discuss the crank details.

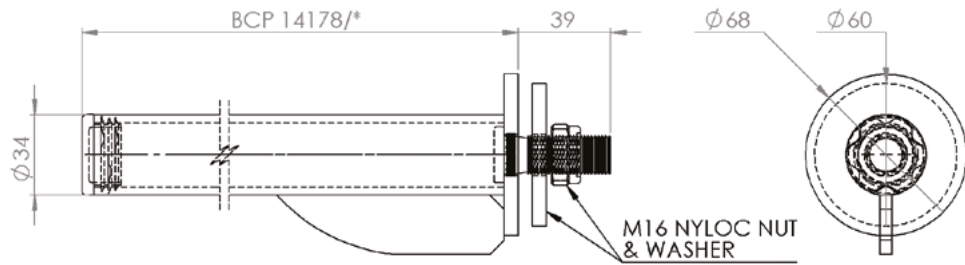


Model No. BCP 14178 Mud Wing Stay Stud Fixing–Straight Tube

Supplied in: Self colour (S), zinc plate (Z) or galvanised (G)

Ø34 tube length as required

When ordering, add length and finish symbols as suffix to above part no e.g. BCP 14178/800Z gives 800mm overall length finished zinc plate.

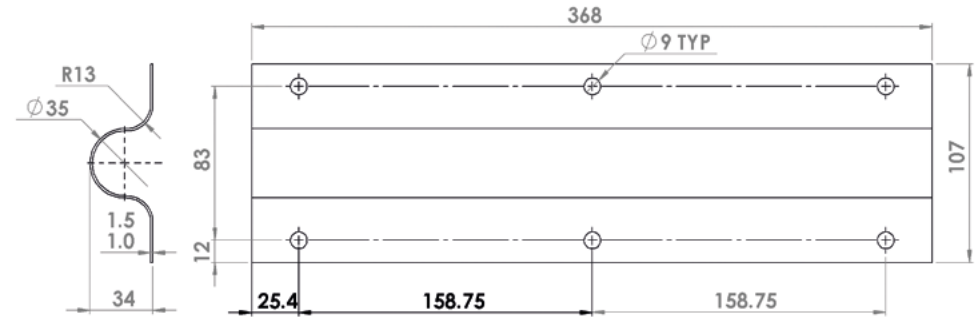


Model No. BCP12465 Mudguard Support Bracket

Supplied in: Galvanised

Use: For use with any Ø34 tube mud wing stay and mudguard support back plate

Weight: 550 g

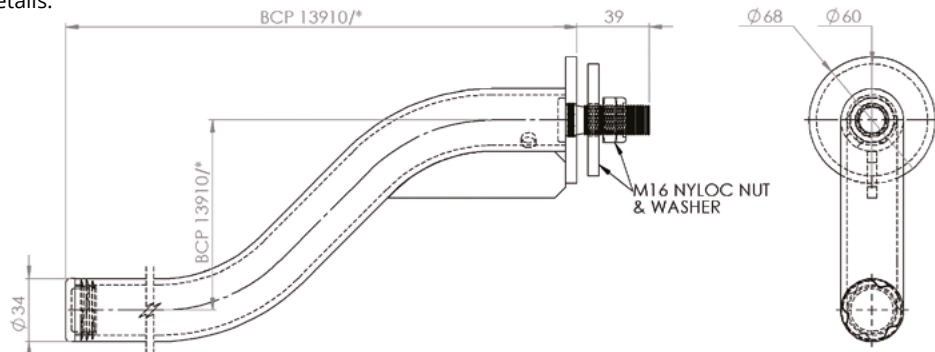


Model No. BCP 13910 Mud Wing Stay Stud Fixing–Cranked Tube

Supplied in: Self colour (S), zinc plate (Z) or galvanised (G)

Ø34 tube length and crank as required

When ordering, add length and finish symbols as suffix to above part no e.g. BCP 13910/800Z gives 800mm overall length finished zinc plate and please contact us to discuss the crank details.

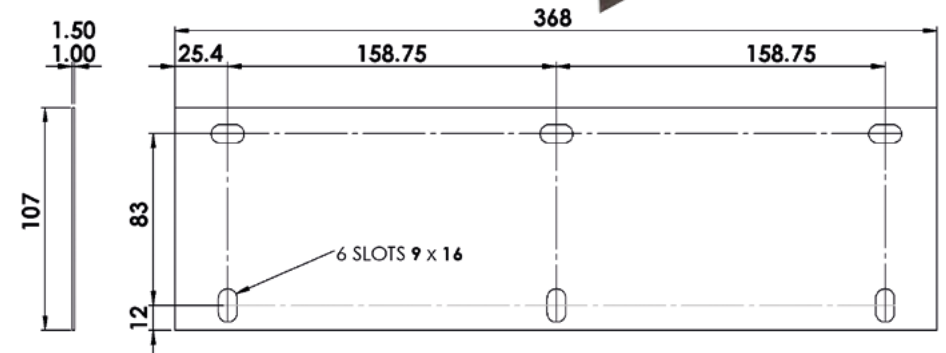


Model No. BCP12939 Mudguard Support Back Plate

Supplied in: Galvanised

Use: For use with any Ø34 tube mud wing stay and support bracket

Weight: 400 g



Model No. BCP13811 King Pin Lock

Supplied in: Red (weather protective coating)

Use: Specifically designed for Trailers

Simple push-button operation

Push-button, drill-proof lock

Protected against rusting

Flange prevents direct access to king pin flange nuts

Cleaner and friendlier to use – internally ribbed to absorb grease

Both king pin bodies and locks are sequentially numbered and supplied with 2 keys.

Replacement keys are available to original purchaser only, on confirmation of serial number

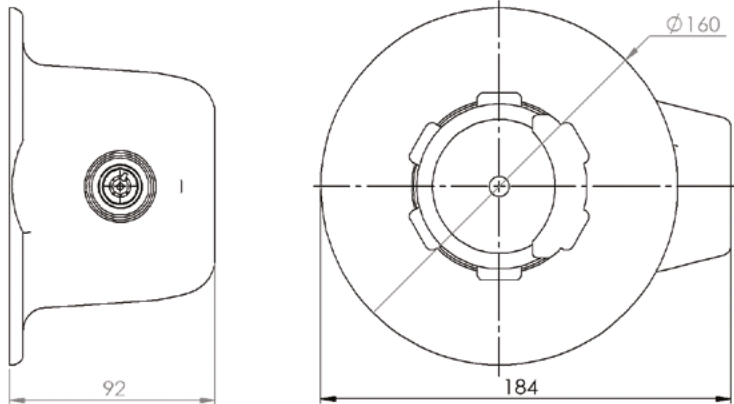
Standard individual locks (to differ), 10,000 possible combinations

For group haulage (suite of keys - to pass) call our sales team

Weight: 3.5 kg

To Fit: 1) Raise to cover king pin completely. 2) Push in lock button to secure.

To Remove: Support lock firmly with one hand. Turn key to release lock button and lower lock from trailer.



Model No. BCP16035 Veloc King Pin Lock

Supplied in: Red (weather protective coating)

Use: Specifically designed for Trailers

Simple push-button operation

Push-button, drill-proof lock

Protected against rusting

Cleaner and friendlier to use

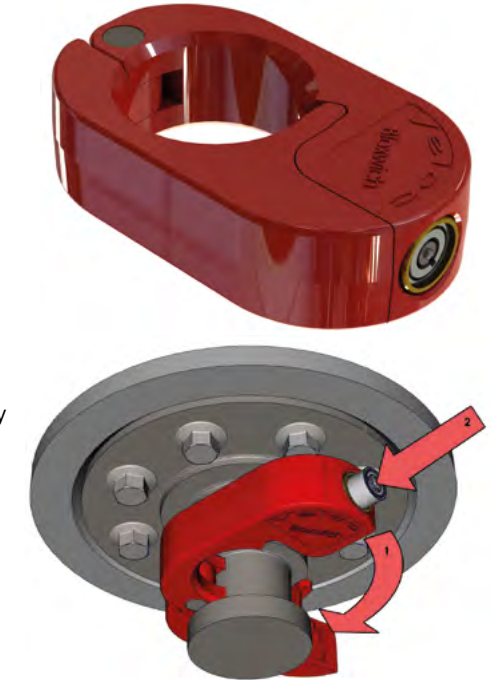
Both King Pin Bodies and Locks are sequentially numbered and supplied with 2 keys.

Replacement keys are available to original purchaser only, on confirmation of serial number

Standard individual locks (to differ), 10,000 possible combinations

For group haulage (suite of keys - to pass) call our sales team

Weight: 1.7 kg

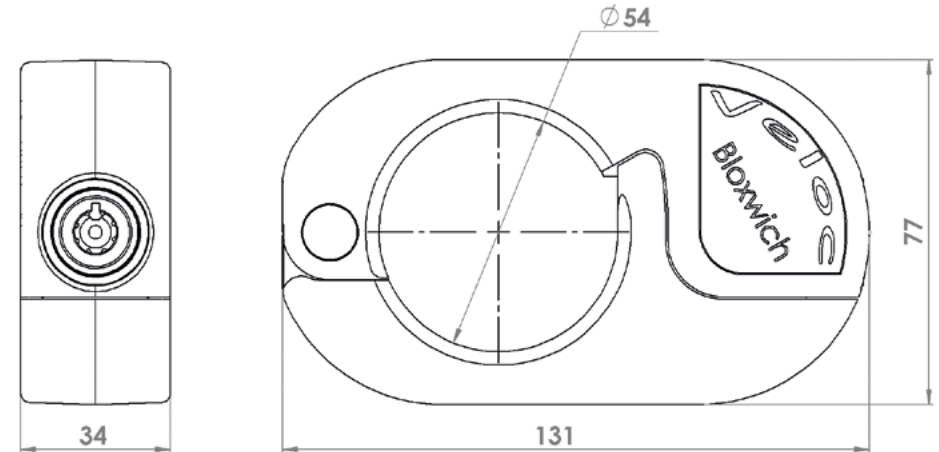


To Fit:

- 1) Fit Veloc around king pin.
- 2) Push in lock button to secure.

To Remove:

- Support Veloc firmly with one hand. Turn key to release lock button, open and lower lock from trailer king pin.



Model No. BCP14281 Ø40mm
Anti-Hitch Lock (Eye Lock)

Supplied in: Red (weather protective coating)

Use: Trailer anti-hitch lock (eye lock)

Quick and easy to fit and legitimately remove

Hardened outer casings - resists sawing, drilling, hammering etc

High security push lock (key required to unlock only)

Over 5,000,000 combinations

Low rounded non-grip profile to prevent attempted tampering or unauthorised removal

Weight: 950 g

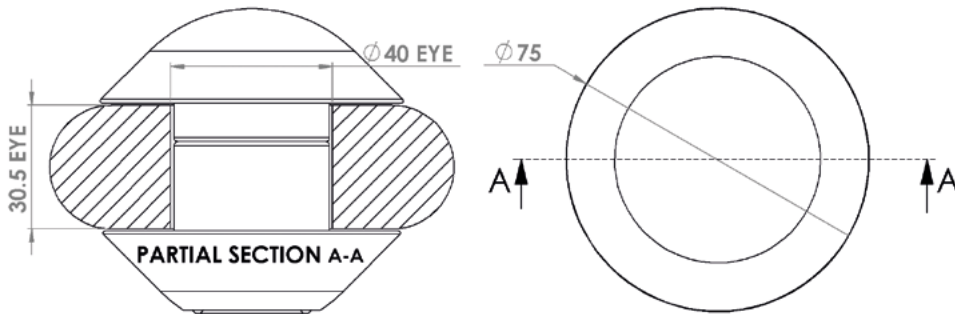
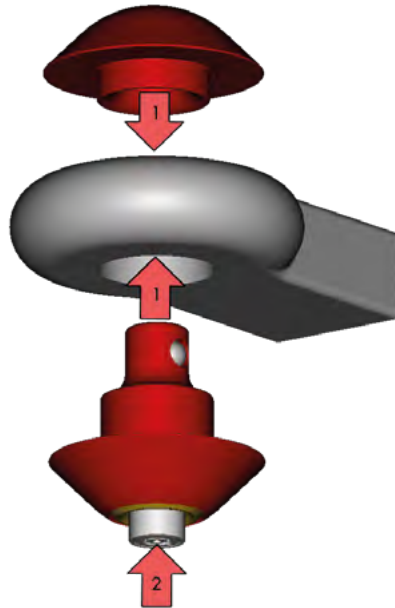
To Fit:

- 1) Fit both halves of the lock through the towing eye.
- 2) Push in lock button to secure.

To Remove:

Support lower half firmly with one hand.

Turn key to release lock button, remove both halves from the towing eye.



Model No. BCP14305 Ø50mm
Model No. BCP17013 Ø57.5mm
Model No. BCP17014 Ø76mm
Anti-Hitch Lock (Eye Lock)

Supplied in: Red (weather protective coating)

Use: Trailer anti-hitch lock (eye lock)

Quick and easy to fit and legitimately remove

Hardened outer casings - resists sawing, drilling, hammering etc

High security push lock (key required to unlock only)

Over 5,000,000 combinations

Low rounded non-grip profile to prevent attempted tampering or unauthorised removal

Bolt on spacers are quickly change to suit different eyes

Weight: 950 g/2.3 kg /2.0 kg

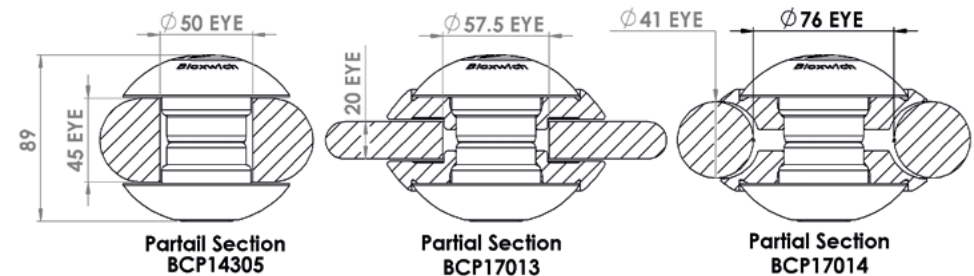
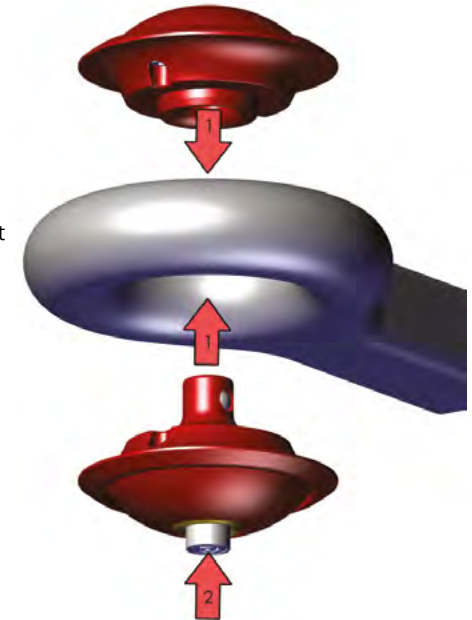
To Fit:

- 1) Fit both halves of the lock through the towing eye.
- 2) Push in lock button to secure.

To Remove:

Support lower half firmly with one hand.

Turn key to release lock button, remove both halves from the towing eye.



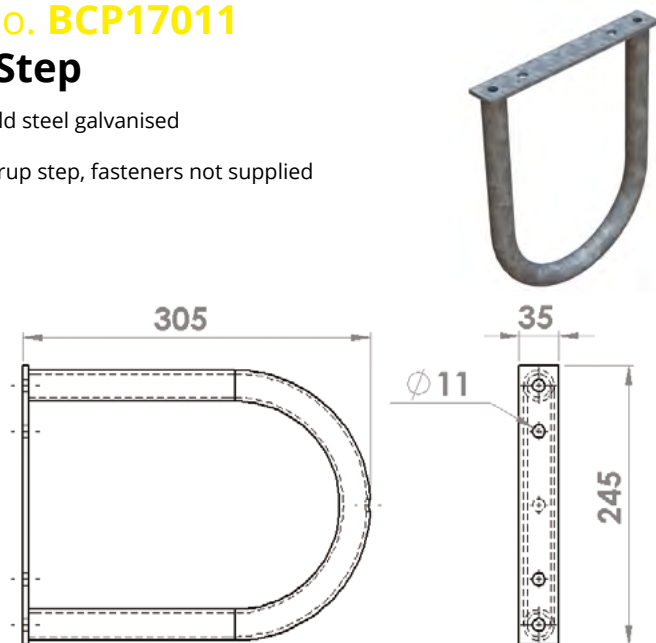
Model No. BCP17011

Stirrup Step

Supplied in: Mild steel galvanised

Use: Single stirrup step, fasteners not supplied

Weight: 1.6 kg



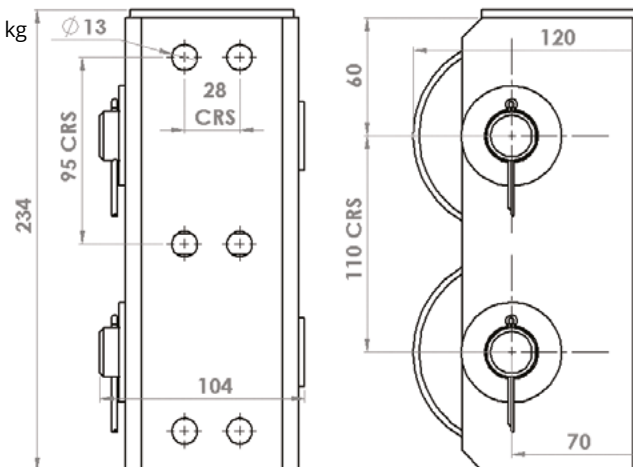
Model No. BCP17020

Vertical Roller Buffer

Supplied in: Mild steel galvanised

Use: Bolt on vertical double roller buffer, fasteners not supplied

Weight: 5.28 kg



Model No. BCP17012

Stirrup Step

Supplied in: Mild steel galvanised

Use: Double stirrup step, fasteners not supplied

Weight: 2.6 kg



Model No. BCP17021

Horizontal Roller Buffer

Supplied in: Mild steel galvanised

Use: Bolt on horizontal double roller buffer, fasteners not supplied

Weight: 6.0 kg

