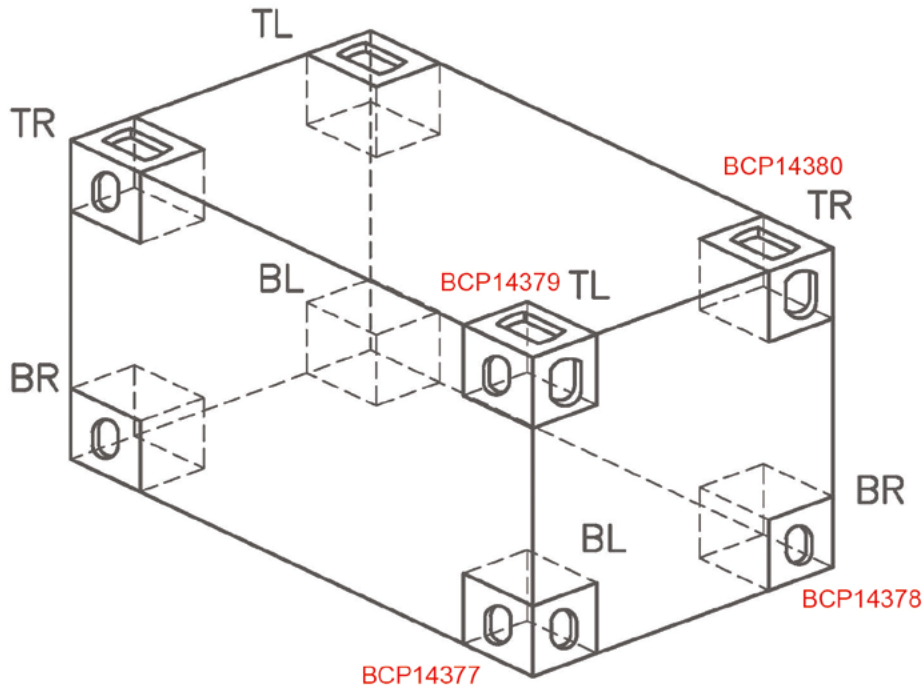


Container

In this section we offer corner castings and ISO/DNV container associated items like interconnectors, twist locks and stacking fittings.

We will be pleased to give detailed advice, but the following points should be considered:

- Are corner castings intended for use on ISO containers only? If so ISO 1161 is applicable only.
- If corner castings are for use on DNV2.7-1/2/3 or ISO/DNV unit's additional certification is required. All corners castings supplied by Bloxwich come with this as standard.
- If corner castings are fitted to DNV or ISO/DNV units they cannot be lifted offshore with shackles through them.
- Other stacking fittings and spacers may be available on request
- For more information and dimensions please visit <https://www.bloxwichdoorgear.com>

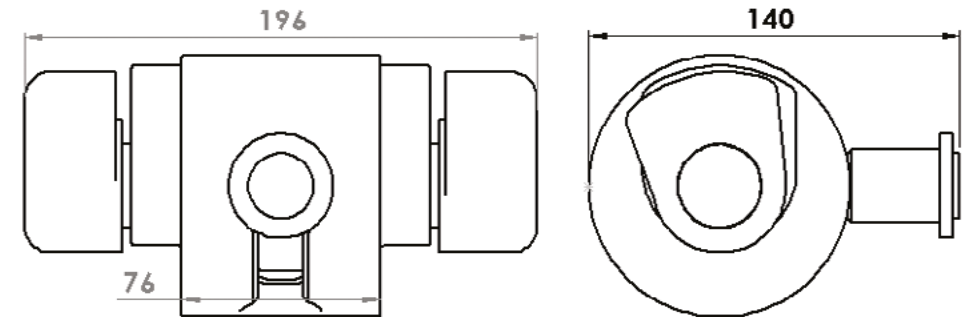


Model No. BCP15089 Interconnector Upper

Supplied in: Self colour

Use: For interconnecting two 10' containers. Set of 4 required (2 upper & 2 lower). Certs provided

Weight: 6.9 kg

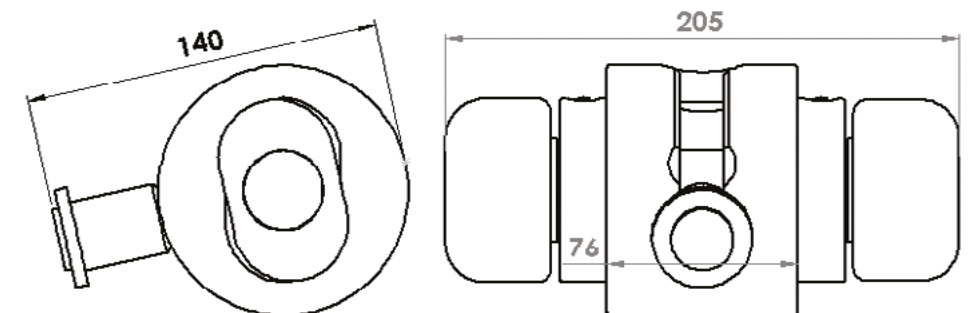


Model No. BCP15088 Interconnector Lower

Supplied in: Self colour

Use: For interconnecting two 10' containers. Can also be used to connect through the sidewall apertures of lower and upper corner castings. Set of 4 required (2 upper & 2 lower). Certs provided

Weight: 6.0 kg

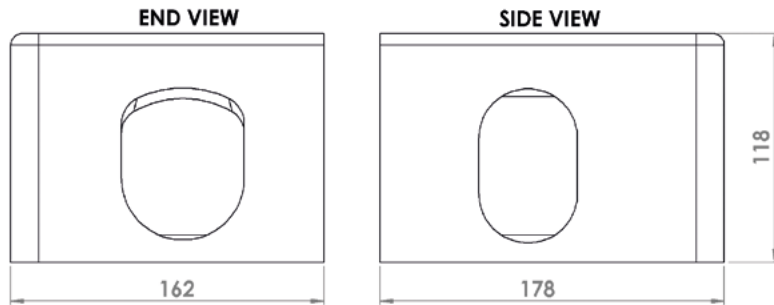


Model No. **BCP14379**(Top Left)
 Model No. **BCP14380**(Top Right)
Top Corner Casting

Supplied in: Self colour

Use: Top corner casting as per ISO 1161 & EN10204:2004 3.2. Certs provided. Top left as shown, top right is symmetrically opposite

Weight: 10.8 kg

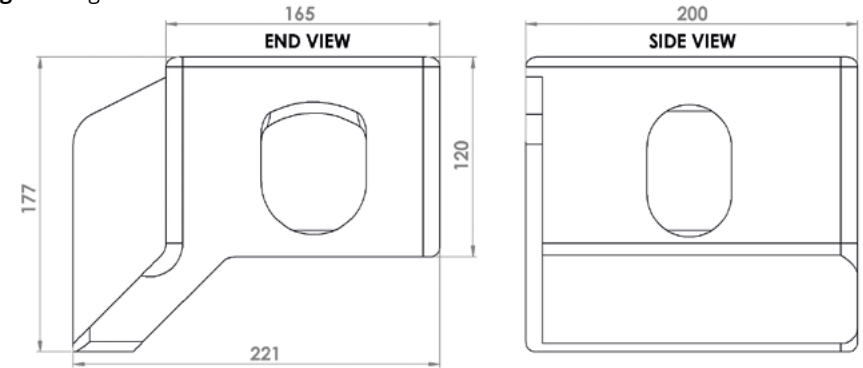


Model No. **BCP14385***(Top Left)
 Model No. **BCP14386***(Top Right)
Top EOC/2.55 Corner Casting

Supplied in: Self colour

Use: Top corner casting as per ISO 1161. Certs provided. Top left as shown, top right is symmetrically opposite

Weight: 16 kg

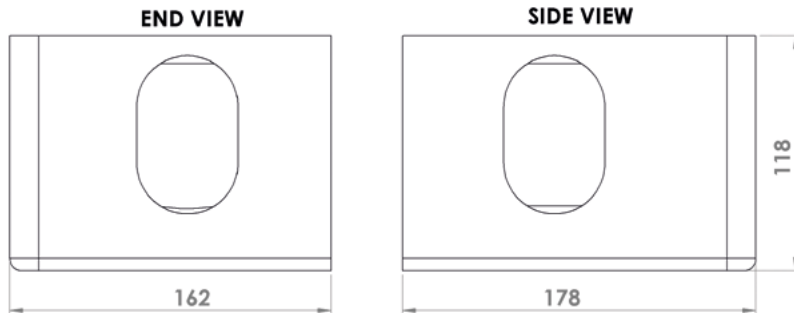
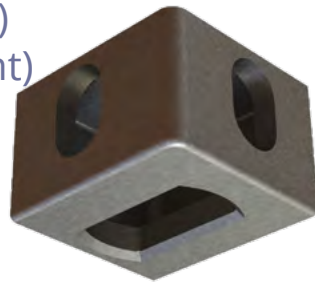


Model No. **BCP14377**(Bottom Left)
 Model No. **BCP14378**(Bottom Right)
Bottom Corner Casting

Supplied in: Self colour

Use: Top corner casting as per ISO 1161 & EN10204:2004 3.2. Certs provided. Bottom left as shown, bottom right is symmetrically opposite

Weight: 10.8 kg

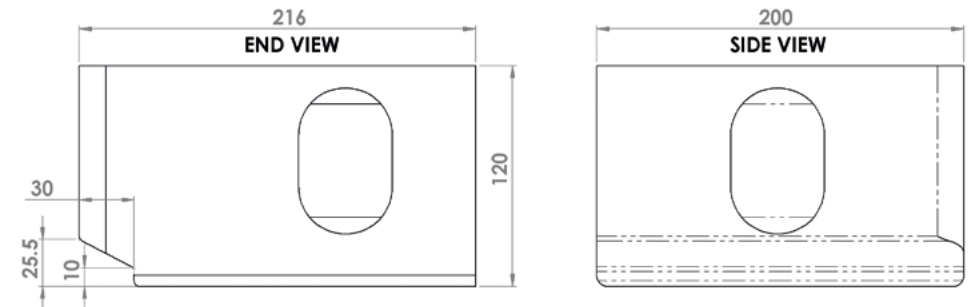
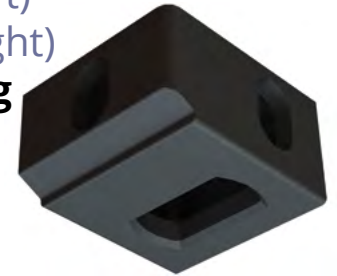


Model No. **BCP14383***(Bottom Left)
 Model No. **BCP14384***(Bottom Right)
Bottom EOC/2.55 Corner Casting

Supplied in: Self colour

Use: Bottom corner casting as per ISO 1161. Certs provided. Bottom left as shown, bottom right is symmetrically opposite

Weight: 16 kg

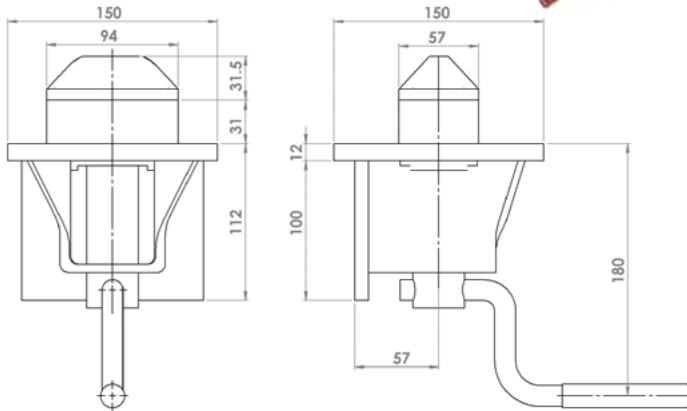


Model No. BCP14087C
Retractable Twistlock
(Cranked Lever)

Supplied in: Plate-work self colour, zinc finish lever and barrel and red nylon lever grip

Use: Weld on retractable twistlock with cranked lever to give more room for operation

Weight: 6.5 kg

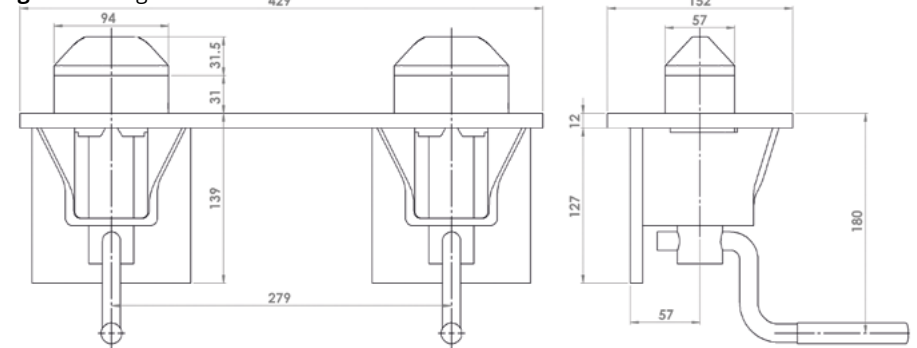


Model No. BCP12996C
Double Retractable Twistlock
(Cranked Levers)

Supplied in: Plate-work self colour, zinc finish lever and barrel and red nylon lever grips

Use: Weld on double retractable twistlock with cranked lever to give more room for operation. 279mm centres allow for fitment of interconnected 10' containers.

Weight: 15.75 kg

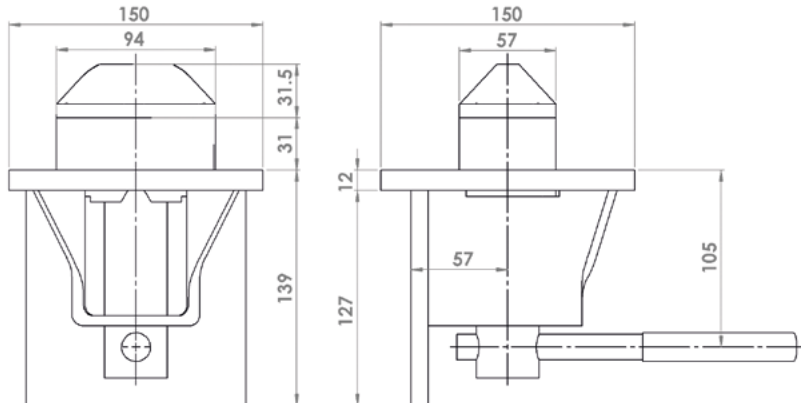


Model No. BCP14087S
Retractable Twistlock
(Straight Lever)

Supplied in: Plate-work self colour, zinc finish lever and barrel and red nylon lever grip

Use: Weld on retractable twistlock

Weight: 6.5 kg

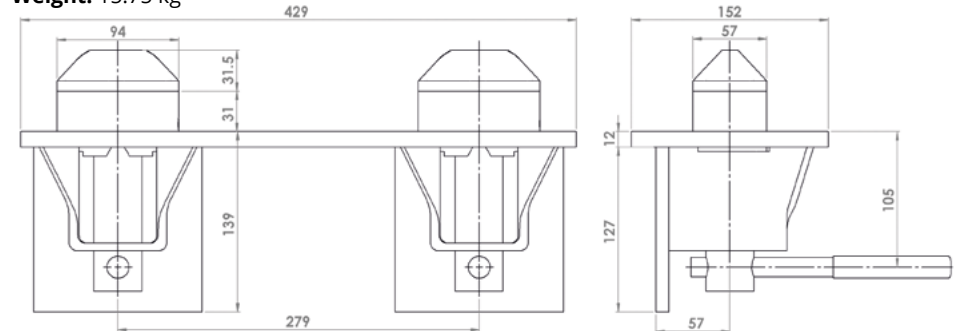


Model No. BCP12996S
Double Retractable Twistlock
(Straight Levers)

Supplied in: Plate-work self colour, zinc finish lever and barrel and red nylon lever grips

Use: Weld on double retractable twistlock. 279mm centres allow for fitment of interconnected 10' containers

Weight: 15.75 kg



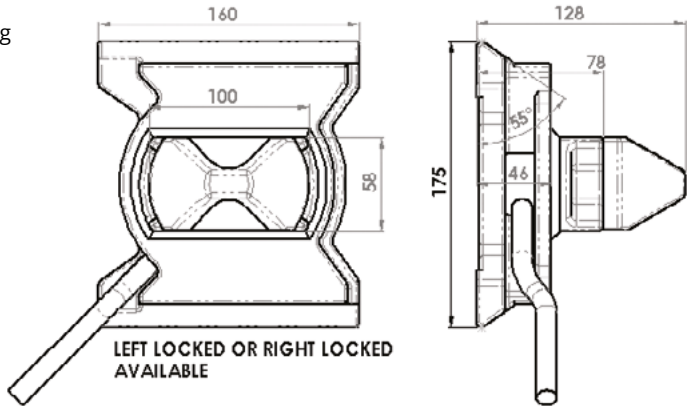
Model No. BCP16029 Dovetail Twistlock 55°

MBL: 500 kN (tension) 420 kN (shear) 2000 kN (compression)

Supplied in: Galvanised

Use: Requires matching foundation BCP16037 and once fitted they provide a removable twistlock for fixing containers in position when required

Weight: 6.4 kg



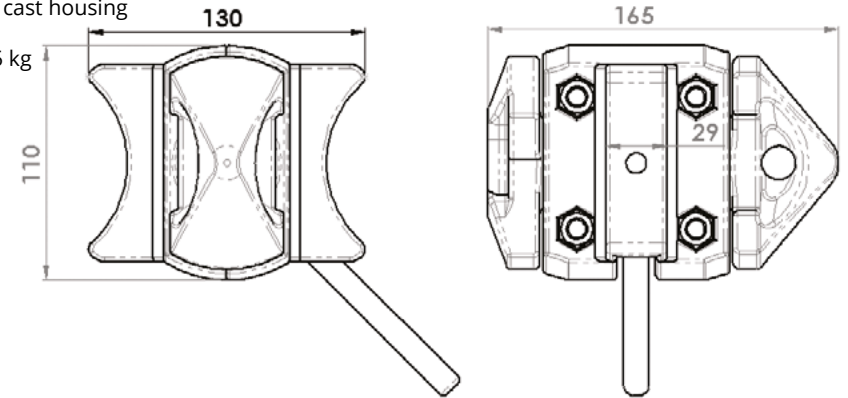
Model No. BCP14410 Marine Twistlock

MBL: 500 kN (tension) 420 kN (shear) 2000 kN (compression)

Supplied in: Galvanised finish

Use: For stacking and locking containers together through their corner castings. Left Hand Locking, high tensile steel locking pin and cast housing

Weight: 5.5 kg



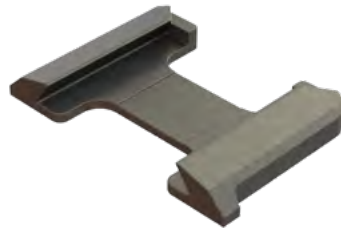
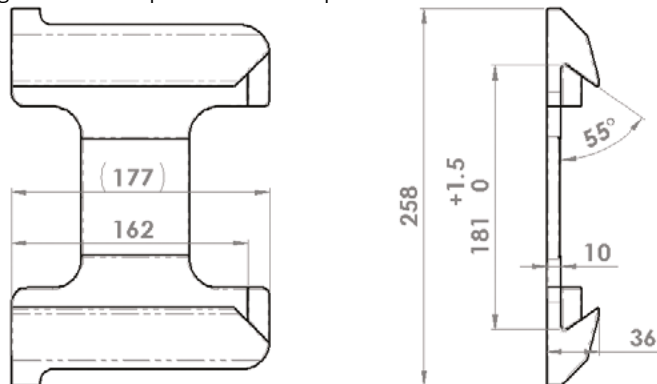
Model No. BCP16037 Dovetail Foundation Plate 55°

MBL: 500 kN (tension) 420 kN (shear) N/A (compression)

Supplied in: Self colour

Use: Dovetail foundation plate for use with matching dovetail twistlock BCP16029 and once fitted they provide a removable twistlock for fixing containers in position when required

Weight: 4.2 kg



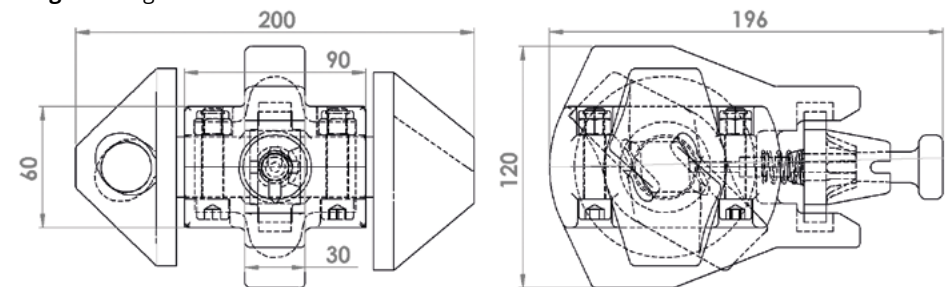
Model No. BCP16024 Semi-Automatic Twistlock

MBL: 500 kN (tension) 420 kN (shear) 2000 kN (compression)

Supplied in: Galvanised with painted yellow upper cone, stainless steel cable and plastic handle

Use: For stacking and locking containers together through their corner castings. Semi-automatic and manual modes. Classification society approved.

Weight: 6.0 kg



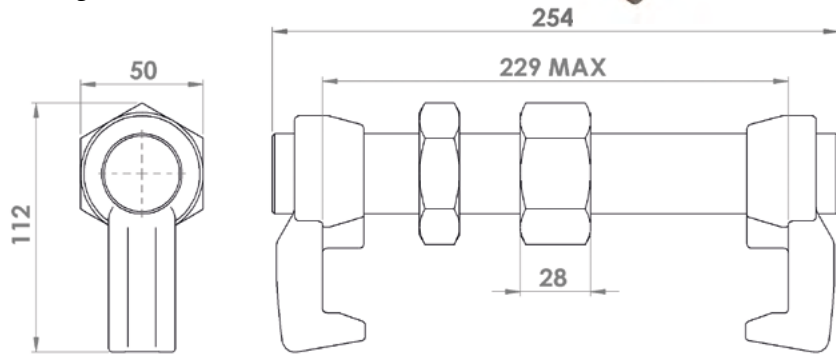
Model No. BCP16026 (Short) Bridge Clamp

MBL: 100 kN (tension)

Supplied in: Galvanised

Use: Bridge clamp for clamping containers together horizontally or vertically through their corner castings

Weight: 3.5 kg



Model No. BCP16015G ISO Stacking Cone

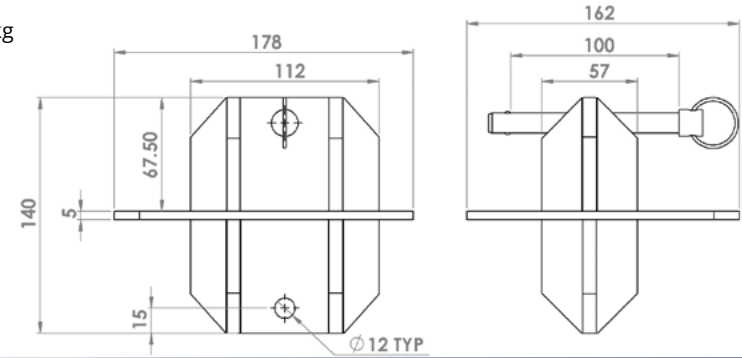
Supplied in: Galvanised with stainless steel detent pin

Use: To securely locate stacked units with upper and lower ISO corner castings. Pin provides a method of fitting stacking cone to units while at ground level before stacking them so there are no working at heights issues or dropped objects. Can also be used in conjunction with our ISO casting spacers

Weight: 2.6 kg



MADE TO ORDER



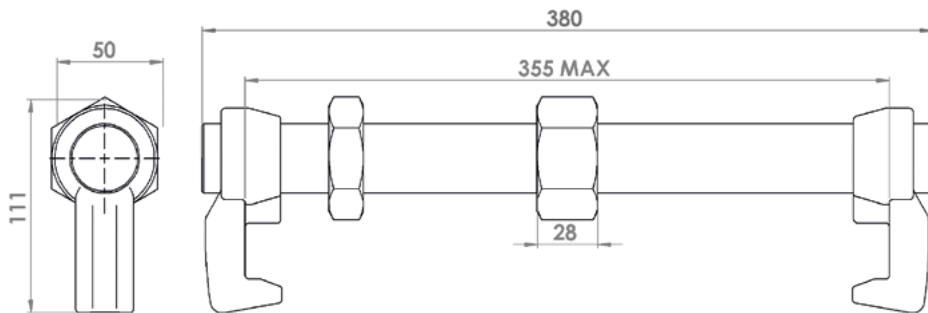
Model No. BCP16028 (Long) Bridge Clamp

MBL: 100 kN (tension)

Supplied in: Galvanised

Use: Bridge clamp for clamping containers together horizontally or vertically through their corner castings

Weight: 4.4 kg



Model No. BCP16020-3/5/10 ISO Casting Spacer

Supplied in: Self colour, zinc plated or galvanised

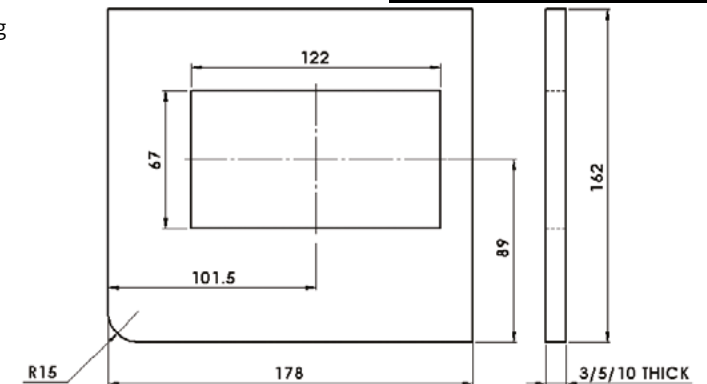
Use: Fitted to level stacked containers before clamping them in place 3mm, 5mm or 10mm

Can also be used in conjunction with our ISO stacking cones

Weight: 0.5/0.8/1.6 kg



MADE TO ORDER

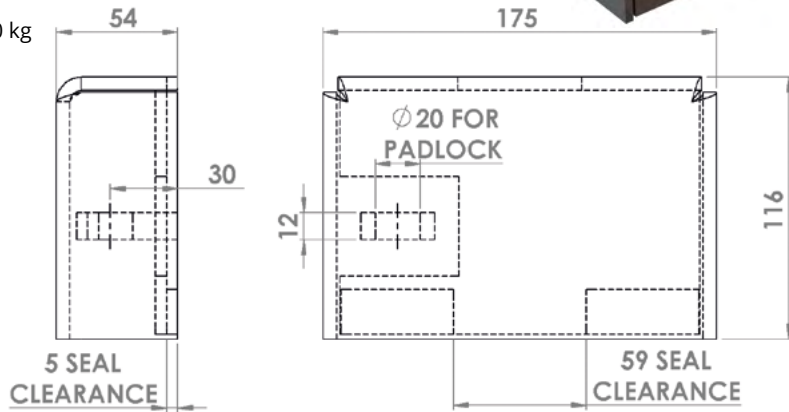


Model No. BCP17006 Lockbox ISO Standard

Supplied in: Mild steel self colour

Use: Provides locking box for fitment of padlocks or container locks to ISO containers. Low profile stays inside the container bumper bars/footprint. Lock not supplied

Weight: 3.0 kg

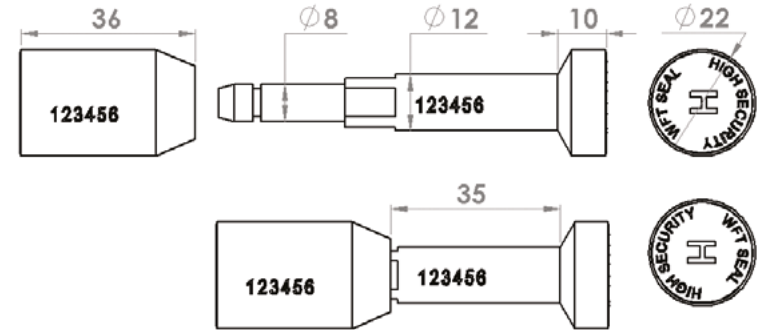


Model No. BCP17015 Container Bolt Seal c/w Bridge (ISO PAS 17712 CERTIFIED)

Supplied in: Mild steel zinc plated with by ABS/Polymer cover

Use: Security seal for shipping containers, trailers, vans, railway wagons and tankers etc. Anti-spin bolt, consecutively numbered, excellent contrast between colour of seal and printing and excellent readability under reduced light conditions. Supplied with breakable ABS bridge to keep the two matching numbered parts together until use

Weight: 54 g

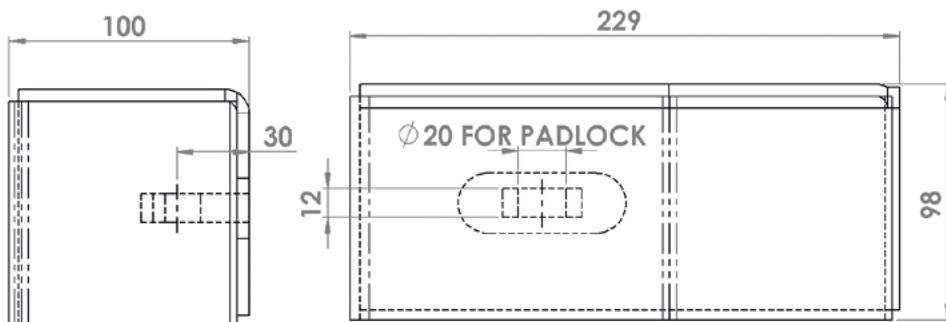


Model No. BCP17007 Lockbox

Supplied in: Mild steel self colour

Use: Provides locking box for fitment of padlocks or container locks to containers. Increased depth gives greater hand access for the fitment of combination locks etc. Lock not supplied

Weight: 2.6 kg



Model No. BCP14431 Container Vent

Supplied in: ABS plastic with a rubber seal

Use: Standard vent fitted to ISO containers, usually recessed into side or end wall corrugations

Weight: 68 g

